




# MODULAR STRUCTURES

CARGO



 0800 446 265

 [www.nztemporarystructures.com](http://www.nztemporarystructures.com)

# CONTENTS

— 03

INTRODUCTION

— 04

HEAVY DUTY INDUSTRIAL SPACE

— 05

BENEFITS

— 07

STRUCTURE DESIGN

— 10

FEATURES / SPECIFICATIONS

— 17

STRUCTURE TYPES

— 19

PROJECTS

— 26

CONTACT



# INTRODUCTION

NZ Temporary Structures is a proven, long-standing provider of modular building products, with an international delivery footprint in New Zealand, Australia, and the Pacific.

With the company's cost effective, flexible, responsive and fully integrated approach has made us a business leader in the modular structure marketplace since 2009.

NZ Temporary Structures offers sustainable modular buildings that provide fast and effective solutions for many industries.

The offsite manufacturing process minimises disruption onsite, and the structures are fully operational shortly after installation.

Our experienced operations team support customers through every development phase, offering a full turnkey solution for building modular facilities, including site preparation, offsite construction of modular components, and onsite delivery and installation.





# CARGO

## Heavy Duty Industrial Space

**When you're on a tight construction deadline, modular warehouses can be the best option. Compared to traditional construction methods, modular warehouses offer a quicker installation and construction process. With a choice of insulated and non-insulated, the Cargo is a fast to build and low-cost solution.**

The Cargo can often reduce construction time by around 30% to 60% compared to a traditional warehouse. This is due to how the Cargo Structure is pre-manufactured in a factory and brought to your site ready for installation.

You can also reduce costs on the Cargo Structure without sacrificing durability and quality. Because the structure is built offsite, there are multiple protections against onsite construction,

such as putting up scaffolding, labourers, theft and delays brought about by weather conditions.

This makes the Cargo Structure an excellent option for businesses within the industrial sector that require economical structures fast. Perfect for storage, logistics, transport, waste management and recycling, agriculture, warehouses, industrial estates and more.

# CARGO

## Benefits

**The Cargo Structure comes in a variety of dimensions and plans. Warehouses used for manufacturing and storage generally need large and uninterrupted interior spans, the Cargo can have clear span widths of 30.00m and a side height of 6.30m.**

The Cargo Structure also features customisation and flexibility of the interior or exterior spaces for future alterations and expansions.

Our proven modular construction system offers fast, cost-effective, and transportable warehouse solutions, permanent modular buildings, which offer the same amenities as a conventional warehouse.

The Cargo custom modular design allows for choices in layouts and finishes, insulation, and load bearings that are easy to install, portable, and for high wind areas the Cargo can be anchored specific to the site.

Our industrial projects range from insulated and non insulated storage facilities, factories, logistics, garages to canopies.



# CARGO

## Made Tough

**The Cargo structure is both aesthetic and functional, allowing you to create safe and efficient workplaces that adhere to stringent regulations, and international building code requirements (IBC). This light-weight building provides storage safety and options for extensions, as well as canopy structures.**

The Cargo provides access for overheight large vehicles with customisable Cargo accessories.

The Cargo structure is designed to accommodate large vehicles like semi-trailers and heavy machinery with custom-sized ceiling heights and steel roller doors.

For ease of access, personnel doors can also be installed, making it convenient for anyone to move materials and equipment in and out.

- Frames made from steel and aluminium
- Big enough and tough enough for heavy duty vehicle and equipment bays
- Can be ground-staked or bolted as required
- As secure as site built
- Portable – setup / takedown in a matter of weeks
- Environmentally friendly
- The building's potential to repurpose allows for high resale values



# CARGO

## Architectural Drafts

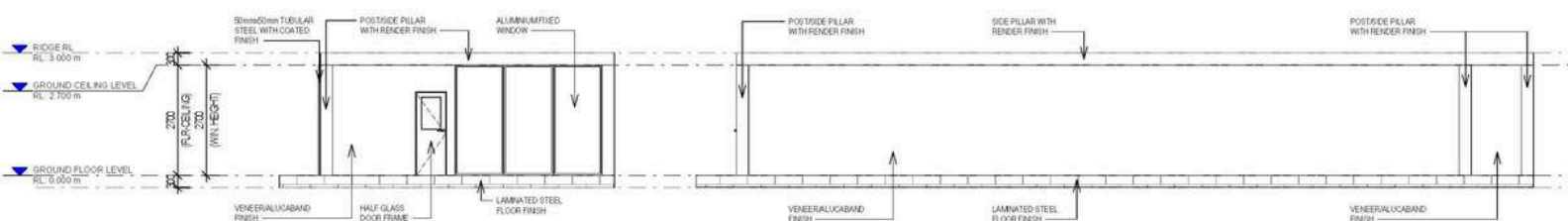
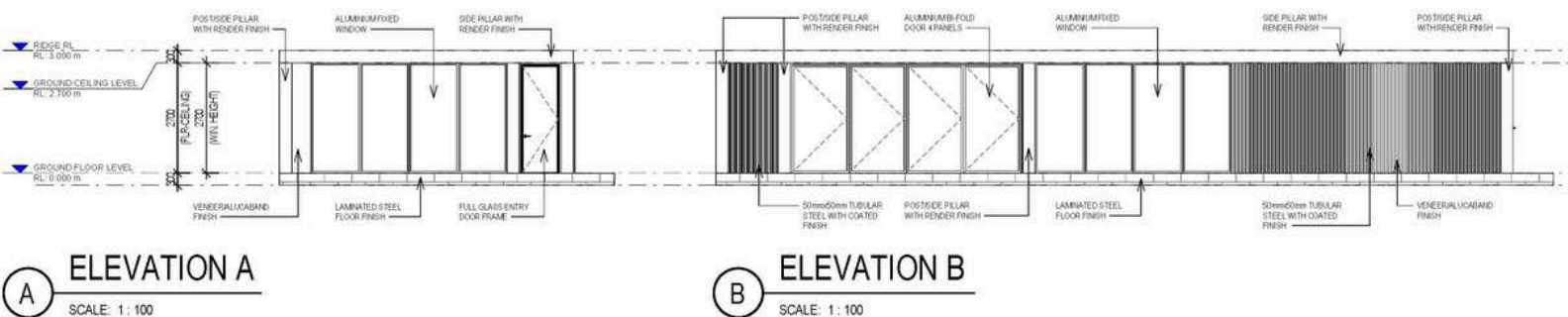
**Geanald Cruz is an experienced BIM/Architectural Drafter and Project Coordinator with over ten years in the field. He has worked with architectural firms in the U.S., Australia, and the Philippines, earning a reputation for technical excellence, creativity, and commitment to design integrity.**

Geanald has extensive experience in residential, commercial, and healthcare projects, specialising in Building Information Modelling (BIM), architectural drafting, and cross-disciplinary coordination.

He is proficient in Revit, AutoCAD, Bluebeam, and Microsoft Office, showcasing skills in 3D modeling, rendering, and detailed drafting. His roles include Project Coordinator, Revit Specialist, Architectural Drafter, and AutoCAD Head Draftsman, where he ensures regulatory compliance and effective communication with architects and engineers.

Geanald Cruz excels at creating efficient drawing configurations and incorporates feedback to ensure high accuracy and design intent. What distinguishes him is his emotive approach to architecture, viewing each drawing as a means to enhance human experience. He brings empathy, curiosity, and collaboration to his projects, thriving in environments where design is both functional and expressive.

With a solid background in architectural technology, he enhances every design detail, contributing to spaces that are not only well-constructed but also emotionally impactful.



# CARGO

## Design Concepts



**Good 3D visuals are an important part of any project, our designer, Ziggy Ziegler, brings his skills to the table to provide just that. A true craftsman dedicated to making ideas come to life, Ziggy brings 30 years of experience in visualising concepts and translating ideas into reality.**

Working extensively in film, TV, theatre and events, before architecture and construction, gave him the ability to listen and comprehend functional and artistic concepts and how they relate to the people that use them.

This first-hand experience gained onsite in the real world lets Ziggy literally see a project in his mind and be able to translate that into visuals that make sense. Considering all the stake holders and their requirements in the project, whilst remaining focused on creating inspired solutions at the same time.

Bringing projects to life in visuals is a passion that has been yielding amazing results across several industries in a large array of projects. Since starting incREDible Studios 5 years ago his focus has been on making these projects shine in a unique way.

From golf courses in the USA, glass structures in Dubai, terminals in New Zealand, airports in Australia, film studios in Japan, outdoor stadiums, shopping centres, race tracks, concert arenas, and retail Ziggy welcomes projects of all sizes with one specific goal, to get it right and make you smile.





# CARGO

## From Design to Installation

**We have been managing projects, large and small since 2009 and throughout this time, we have worked tirelessly on ensuring we provide the best experience in the industry. We focus on our workflow ensuring every aspect is covered and delivered to your expectations. Enabling us to provide a turnkey solution for your design needs right through to installation.**

We call this our Concept to Installation process, and it all starts with you.

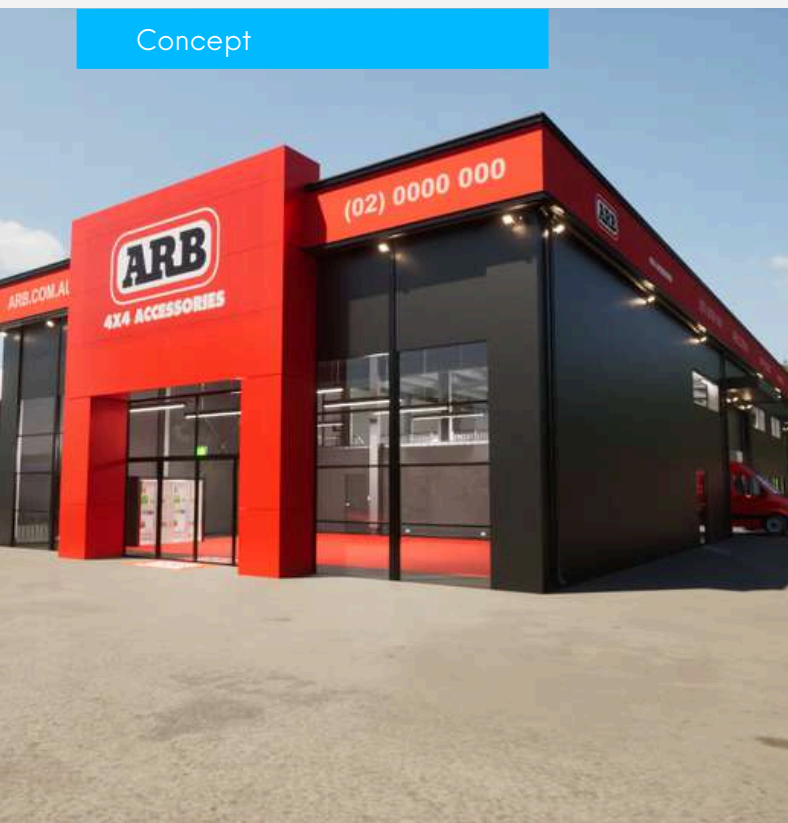
We share our experience and take care in understanding yours, to work together to achieve your desired outcomes.

From your brief, Ziggy Zeigler designs the concept. Creating concept designs allows us to bring our capabilities and merge these with your ideas to create the perfect space.

Our architects specify and document all design elements for submission to all relevant parties. One being our German engineering partners, HR Structures GmbH who manufacture the building framework, while our project management team source materials, building documentation through to installation. We provide a holistic approach to delivering your project.

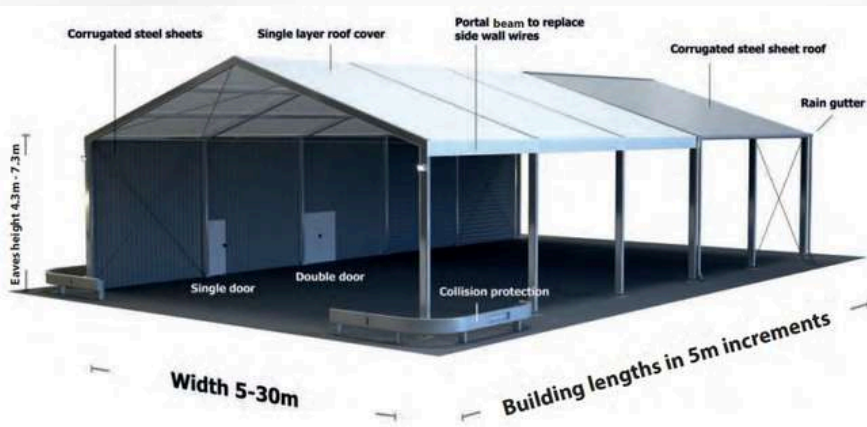
We offer an ongoing maintenance program, ensuring your completed and installed building looks just as good as it did the day of install.

Concept



Installation





# CARGO

## Specifications

- Bracing System: Internal high-level bracing giving open & clear span spaces.
- Frame Construction: Hard pressed 4 groove aluminium cube profile.
- Profile Size: Profile sizes relative to situation requirements.
- Roof Covers: Steel Sheet, Sandwich Panel, Thermal roof system provides additional insulation and condensation protection in the roof area.
- Wind Loading: Structures are all calculated to withstand wind loading based on the physical site location, and to meet Australian, New Zealand, and European safety standards.
- Walling: Steel-clad sandwich panels, steel sheet, facade walling system, vertical or horizontal glass walls, ABS solid wall.
- Floor options. Heavy duty systems.



**Span Width**  
5.00m - 30.00m



**Length**  
Unlimited in  
5.00m bays



**Side Height**  
Up to 6.30m



**Wind Load**  
To site specifics



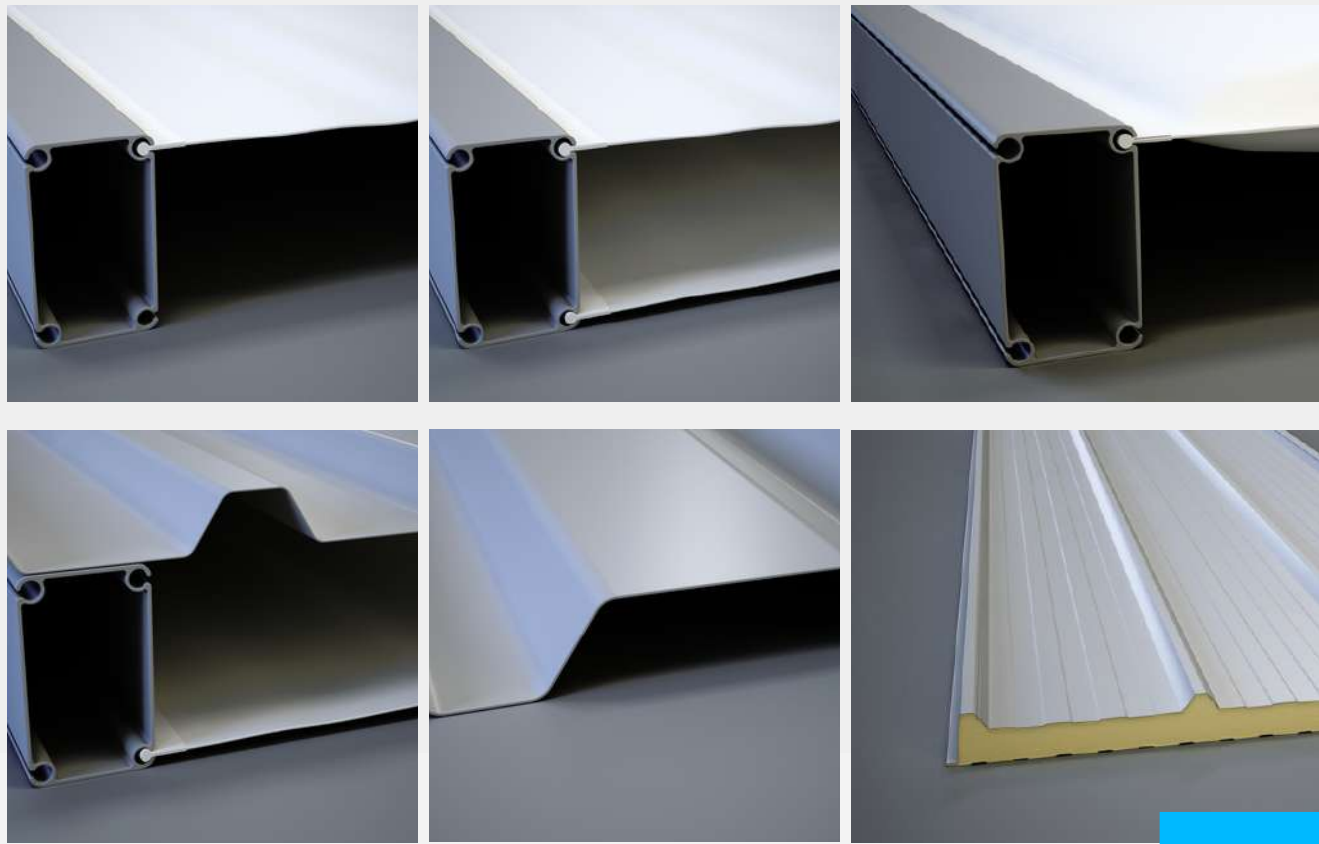
**Custom**  
Fixtures &  
Dimensions  
available



**Anchoring**  
As site specifically  
requires

# CARGO

## Features



### Roof and Side Panels

#### Single Layer PVC Covers

PVC Covers are flame-retardant according to DIN 4102-B1, and come in translucent and opaque, and are available in a wide variety of colours.

#### Thermal Roof PVC Covers

The air-filled double-shell roof PVC Covers provides insulation and condensation protection in the roof area. PVC Covers are flame-retardant according to DIN 4102-B1.

#### Underlay Covers

Underlay PVC Covers are a lighter material under the outer single-layer PVC Covers or the trapezoidal sheet absorbs and drains away any condensation that may arise.

#### Trapezoidal Sheet

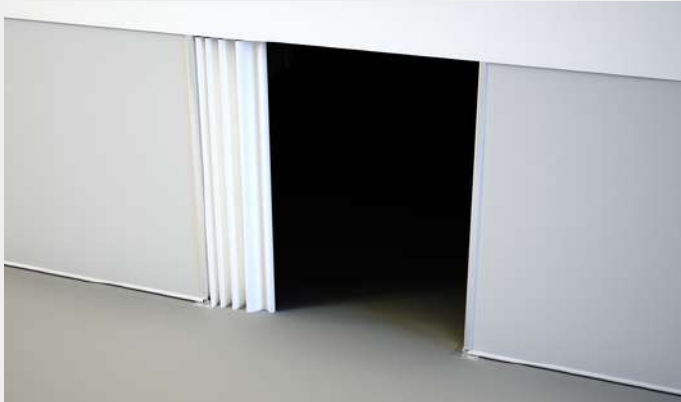
The strip-galvanized coated trapezoidal sheet is best suited for roofing and insulated structures. The fleece coating in the roof area prevents condensation.

#### Sandwich Panel

The insulated sandwich element is suited for insulated structures. Available in different material thicknesses and suitable insulation values with PUR foam or mineral wool filling. Different exterior colours are also available.

# CARGO

## Features



## Accessories - Roller Doors

### PVC Covers

Sliding PVC Covers are used in insulated structures and can be used flexibly thanks to their manual and easy handling.

### Sliding Roller

The manually operated sliding roller door offers increased theft protection compared to the Sliding PVC Covers. They are designed for use in insulated structures.

### Roller Shutter

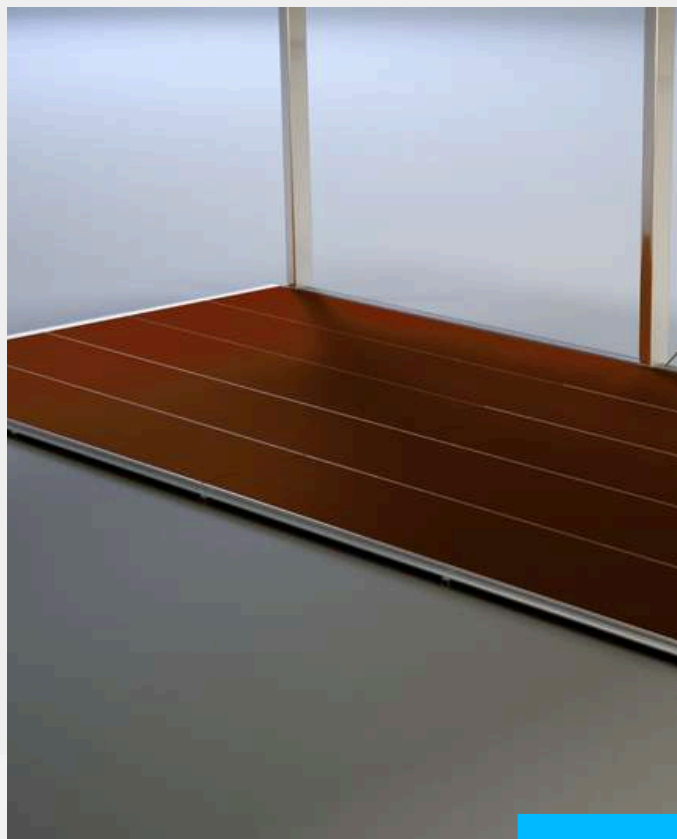
The electrically operated roller shutter has light insulation and is easy to operate thanks to the control.

### Sectional Door

The electrically or manually operated sectional door has increased thermal insulation. These roller doors are ideal for use in insulated structures. Options such as window sections or integrated doors are also available.

# CARGO

## Features



### Doors

#### Single Leaf Doors

Perfect for personnel or as fire escape doors.

#### Double Leaf Doors

Like the single-leaf door, the double-leaf door can be used for personnel or fire escape doors, and can also be filled with glass.

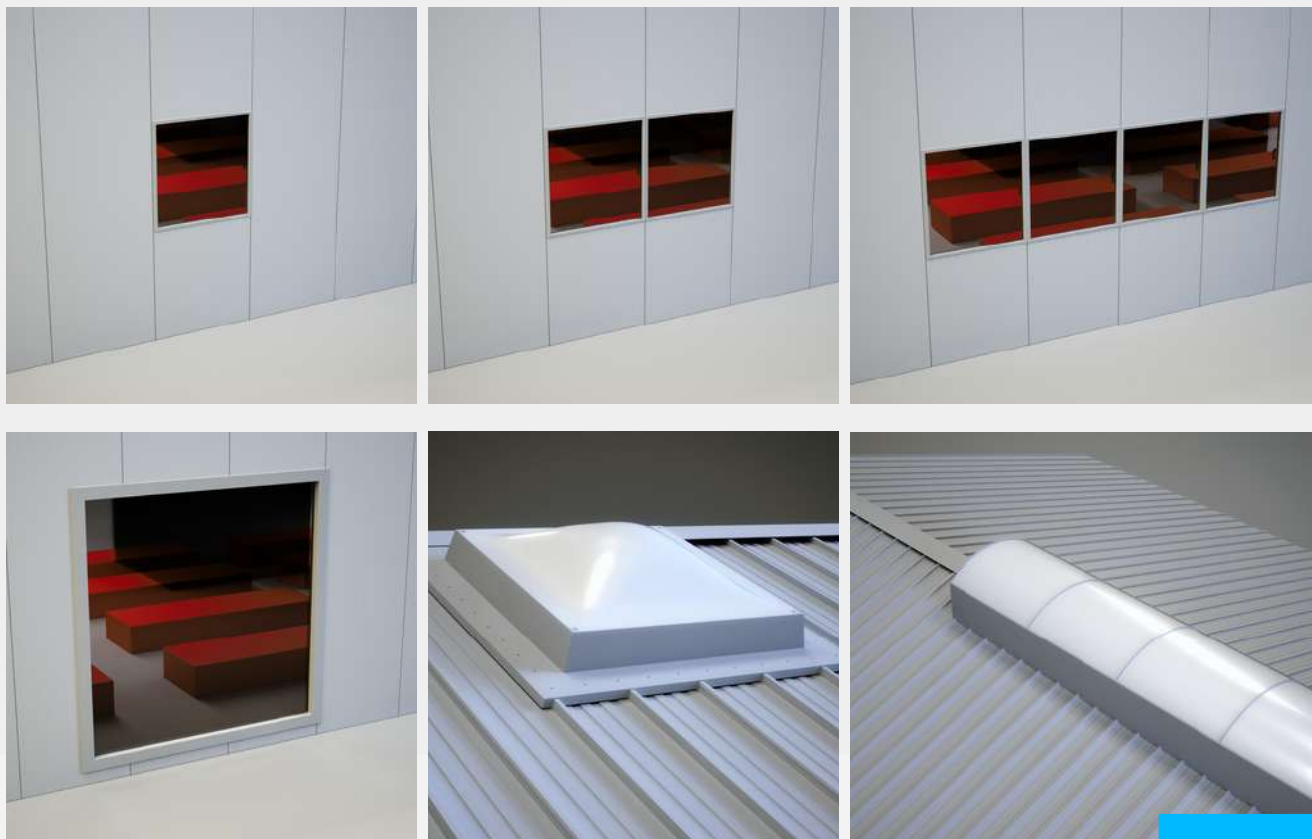
### Floors

#### Heavy Duty Flooring

The heavy-duty floor is the most efficient floor system in our range, which can be quickly installed using a forklift or crane. In addition, it has a low transport volume compared to other flooring systems.

# CARGO

## Features



## Windows

### Single-leaf / 2-leaf / 4-leaf windows

Various windows can be integrated into the structure to provide light and fresh air.

### Display Windows

Approx. 2.2 x 2.50m. Our display windows serve as the greatest possible source of light and are ideal for sales and exhibition rooms.

### Dome Light

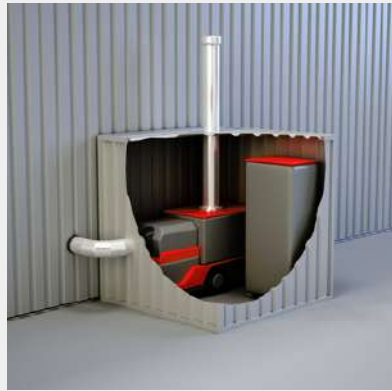
The dome light or ridge light strip is used to provide direct light in the roof area and additional air supply. Further options such as RWA equipment are available.

### Wall Light Strip Polycarbonate

Approx. 1.0 x 4.0m. The wall light strip is a cost-effective alternative to glass elements and is installed in the wall cladding under the eaves area.

# CARGO

## Features



## Miscellaneous Accessories

### Lighting

Lighting systems including electronics are available for additional lighting in the interior of the structure.

### Heating & Cooling

Mobile heating & cooling systems enable energy-saving benefits to the Cargo structure.

### Guard Rail

The guardrail protects the industrial structure from external influences such as approaching forklifts and trucks.

### Rain Gutter

Drain away rainwater in a controlled manner, our rain gutter includes the associated downpipes.

### Stairs

We offer indoor and outdoor stairs in a variety of sizes, shapes and designs.

### Internal Partitions

Internal gable partitions can be installed and connected using doors and rollers.

# CARGO

## Features



### Anchoring

#### Soil Nails

Soil nails are the simplest and most cost-effective solution for temporary anchoring, as this variant can be used to fasten our industrial structures to a wide variety of surfaces without foundations.

#### Dowels

Dowels are mostly used in connection with permanent buildings and concrete foundations to ensure a secure and long-lasting stability of the structure.

#### Floor Sealing

When closing the floor using a facade and end plate, there are different variants and options for sealing. Depending on the surface, appropriate finishing options are available.



# CARGO

## Structure Types

### Canopies

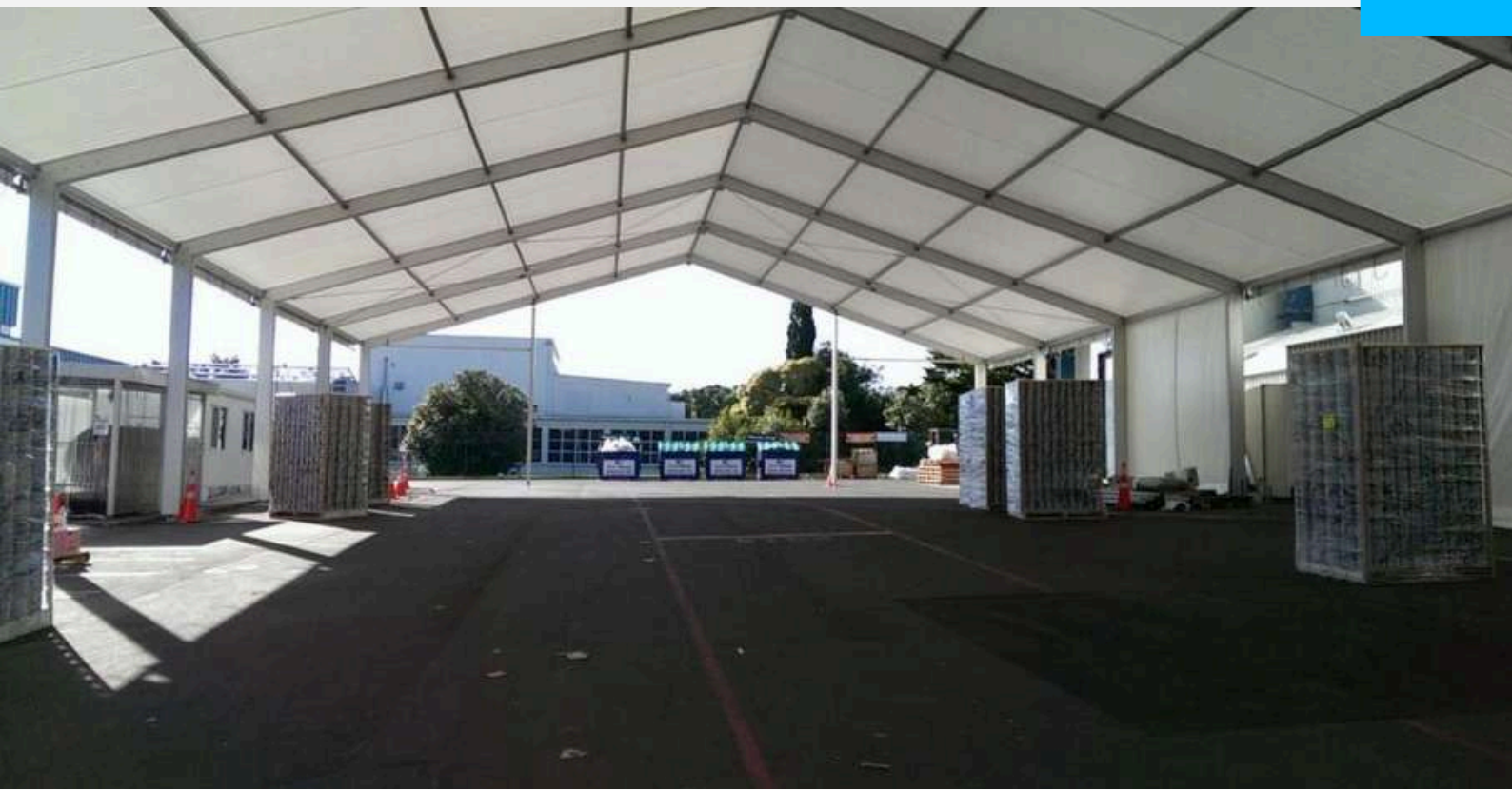
Industrial canopies are perfect for companies that want to protect their equipment, vehicles, tools, and employees from the elements.

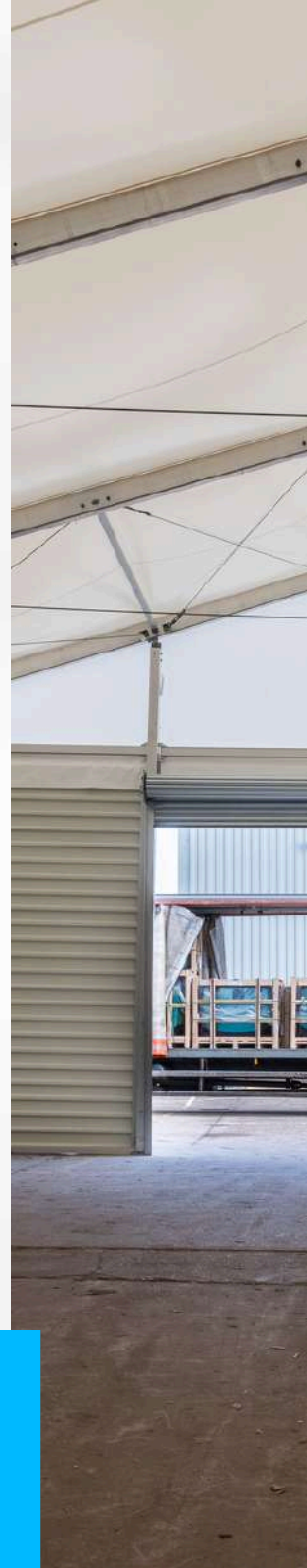
The Cargo canopy can house equipment up to 6.30 metres in height. This allows for large scale equipment and vehicles to be stored and the crew can take equipment in and out without worrying about accidents.

### Sensitive Equipment Storage

If you have unique requirements such as insulation and condensation protection, the Cargo is designed for both heating and cooling. Our thermo roof solutions help you to manage air circulation, moisture evaporation, light, shade, and heat, and our reliable structures are capable of withstanding wind, frost, and hail.

For all-round temperature protection our insulated wall panels are available in various thicknesses. Windows can be single or double glazed as required.





# CARGO

## Structure Types

### Distribution Storage

The Cargo Structure provides ideal storage space to meet the demands of increased packaging, processing and distribution operations, and for seasonal peaks. From a basic storage facility, to a customised semi-permanent storage building, all our storage solutions are fully adaptable, with a wide range of options.

### Flex Usage

Flex usage allows for a wide range of office and warehouse space. The Cargo Structure can be used for many purposes and is easier to retrofit to meet a company's needs than typical warehouse buildings. This flexibility is ideal for a wide range of companies that need office space with a warehouse component.

# ARB 4 X 4 ACCESSORIES

## Features



## Retail Building Project

As ARB 4x4 Accessories partnered with us to create a functional, purpose-built facility in Braemar, Southern Highlands.

The outcome was a state-of-the-art showroom and warehouse designed to embody ARB's premium brand image while maximising functionality and efficiency.

### Project Overview

- Location: Braemar, Southern Highlands
- Structure Size: 15m x 40m x 6.3m with mezzanine
- 433m<sup>2</sup> warehouse, 195.3m<sup>2</sup> showroom, 150m<sup>2</sup> retail space, 75m<sup>2</sup> mezzanine
- Primary Use: Retail showroom, warehouse storage, and office facility
- Design Focus: Aesthetic appeal, brand representation, and operational efficiency

# GRIFFIN BISCUITS



## Features



## Griffin Biscuits Project

To cost-efficiently manage seasonal loads, Griffin Biscuits New Zealand expanded their deliveries with a canopy to effectively handle their product delivery. The canopy structure provided Griffin Biscuits with a weather proof and secure space to process their deliveries.

Canopy structure featured:

- 15m x 20m structure on a 5.2m leg height, was a seamless addition to their existing facility.



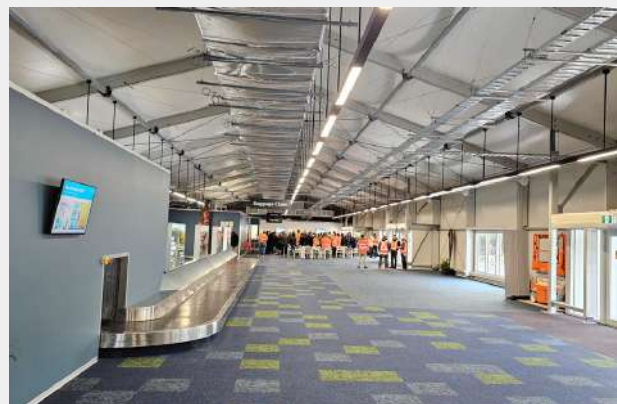
## CANOPY STRUCTURE GRIFFIN BISCUITS

15.00m x 20.00m x 5.20m

# KIWI RAIL



## Features



## Inter Islander Ferry Terminal Project

Custom structure featured:

- Modular Frames + Thermo roofing system + Guttering system.
- Unmodified wall panels - E-W sandwich wall, 4.20m high 5.00m long Iso terminal panels.
- Recessed doors entrance - Modified modular structure with sliding glazed doors.
- Window modified end wall panels - S-N sandwich wall, 4.20m roof crest high, 7.50m wide Iso Thermo panels, floor to 2.04m windows.
- Modified roller door end wall panel - Roller door and modified wall panels for the N-S end walls with a 4.20m to crest of roof height and 7.50m long.



CUSTOM STRUCTURE

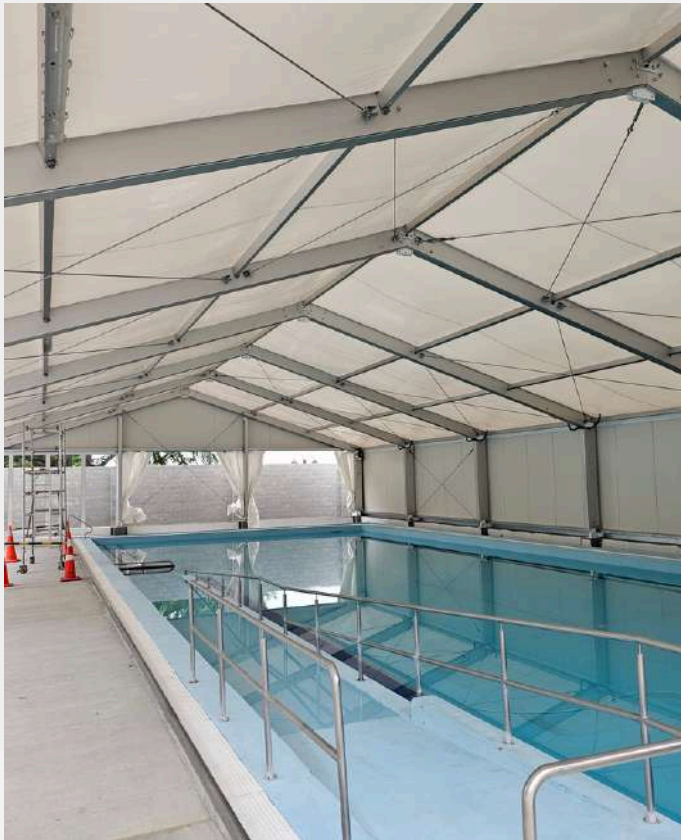
**KIWI RAIL**

15.00m x 65.00m x 4.20m

# SWIM ZONE



## Features



## Covered Swimming Pool

Sport Waikato, addressed issues at the Swim Zone Matamata Leisure Pools facility after the removal of the indoor pool enclosure.

NZTS installed a 15m x 30m x 3m structure at Matamata Swim Zone, It was designed for long-term use with a 25-year design life.

Structure featured:

- Tailored the design to suit the high humidity
- Insulated wall panel
- Thermo roof cover is translucent PVC allowing the transmission of natural light during daylight hours, whilst providing a thermal layer.



CUSTOM STRUCTURE

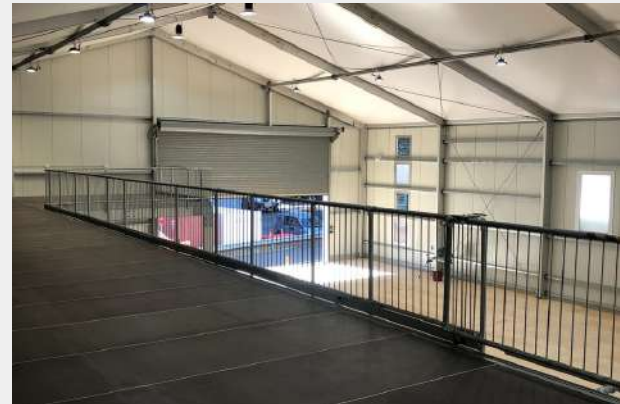
**SWIM ZONE**

15.00m x 30.00m x 3.00m

# FOX STUDIOS



## Features



## Film Production Project

For this build, we created a custom industrial structure with a 10.00m ridge height, and had to meet the challenge of a sloped site. We engineered and manufactured all the structural supports to create a 2.5 tonne capacity industrial floor.

We added large roller doors to allow for easy access. And built a mezzanine level to allow for heavy loads as FOX Studios needed flexibility in the design for many types of uses.



CUSTOM STRUCTURE

**FOX STUDIOS**

20.00m x 35.00m x 6.20m





## Storage Structure Project

We provided NGK with an efficient storage and maintenance facility installed in just 9 days.

- Thermo roof and pump
- Hardware for vertical mount steel
- Insulated fire wall and gable at the rear and first two bays.
- 2 Roller doors with Automatic operation
- 1 Personal door
- Rain guttering for the structure



# ENERGY LOGISTIX

## Features



## Equipment Storage Structure Project

Energy Logistix guarantees the prompt delivery of vital goods, ensuring secure and on-time transportation across the country as committed Supply Chain Partners.

- Thermo roof.
- Steel sheet gables and walls.
- 40Lm rain gutter and down pipes.
- 5m wide automatic roller shutter door and personnel door with panic handle.

# PARTNER WITH US

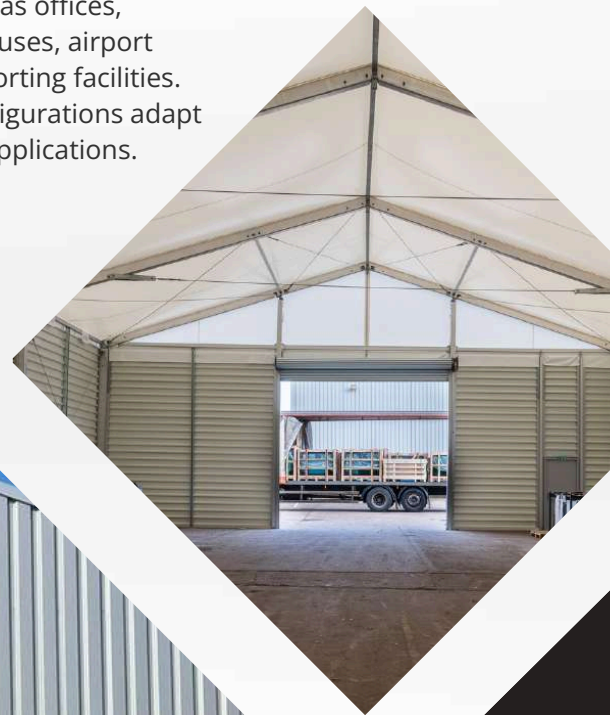
## Your Innovative Partner in Modular Building

Modular buildings offer a sustainable and flexible approach to construction, allowing companies to reduce their environmental impact and promote recycling. They are ideal for companies interested in greening the building process.

Modular construction is a highly streamlined process that can see project times reduced as the structure components are manufactured offsite. And the insulated structure ensures a more consistent R-value rating.

Modular structures reduce the use of new material resources, demolition waste, construction time, and transportation costs. They also have the advantage of serving a new purpose beyond their expected lifespan.

Structures can be moved and repurposed for different functions including commercial and industrial applications such as offices, hospitals, warehouses, airport terminals, and sporting facilities. Their flexible configurations adapt well to different applications.





# Build Your Next Project





## CONTACT US



0800 446 265



[greg@nztemporarystructures.co.nz](mailto:greg@nztemporarystructures.co.nz)



[www.nztemporarystructures.com](http://www.nztemporarystructures.com)



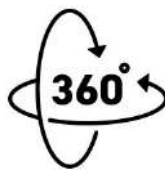
Suite 9796, 17B Farnham Street, Parnell,  
Auckland 1052



GERMAN  
ENGINEERED



CUSTOM  
SOLUTIONS



RELOCATABLE  
RECONFIGURABLE



PURCHASE  
OPTION



GREENER  
FUTURE

