



# MODULAR STRUCTURES

VEGAS



0800 446 265



[www.nztemporarystructures.com](http://www.nztemporarystructures.com)

# CONTENTS

— 03  
INTRODUCTION

— 04  
EVENT SPACE

— 05  
BENEFITS

— 06  
ELEVATE YOUR EVENTS

— 07  
DESIGN CONCEPTS

— 10  
FEATURES

— 15  
STRUCTURE TYPES

— 17  
PROJECTS

— 20  
CONTACT



# INTRODUCTION

NZ Temporary Structures is a proven, long-standing provider of modular building products, with an international delivery footprint in New Zealand, Australia, and the Pacific.

With the company's cost effective, flexible, responsive and fully integrated approach has made us a business leader in the modular structure marketplace since 2009.

NZ Temporary Structures offers sustainable modular buildings that provide fast and effective solutions for many industries.

The offsite manufacturing process minimises disruption onsite, and the structures are fully operational shortly after installation.

Our experienced operations team support customers through every development phase, offering a full turnkey solution for building modular facilities, including site preparation, offsite construction of modular components, and onsite delivery and installation.





# VEGAS

## Event Space

**Business owners, event organisers, and agencies are turning to the Vegas Structure to create unforgettable experiences for their customers. With its modern design, this structure has quickly become a popular choice in the event planning industry. Its innovative and elegant features make it an ideal option for hosting annual events.**

The Vegas Structure is a versatile venue for any event.

If you're looking for an event venue that can accommodate any type of event, the Vegas Structure is the perfect solution.

Available in various sizes and shapes, this structure is suitable for wineries, sporting club VIP marquees, and more.

Whether you need to enhance your event outcomes or create a sophisticated ambiance, the Vegas Structure is a great choice.

The Vegas Structure offers numerous advantages, including flexibility, customisation, and sustainability. It allows complete personalisation of the interior and exterior, which can be aligned with your brand, decor, ambiance, lighting, and more.

You have the freedom to customise the structure to your exact needs. Choose between solid panel walls or visually striking floor-to-ceiling framed glass walls with a double opening glass entrance door. In addition, the Vegas Structure can be deployed in any setting, whether it's an open field or an urban environment.

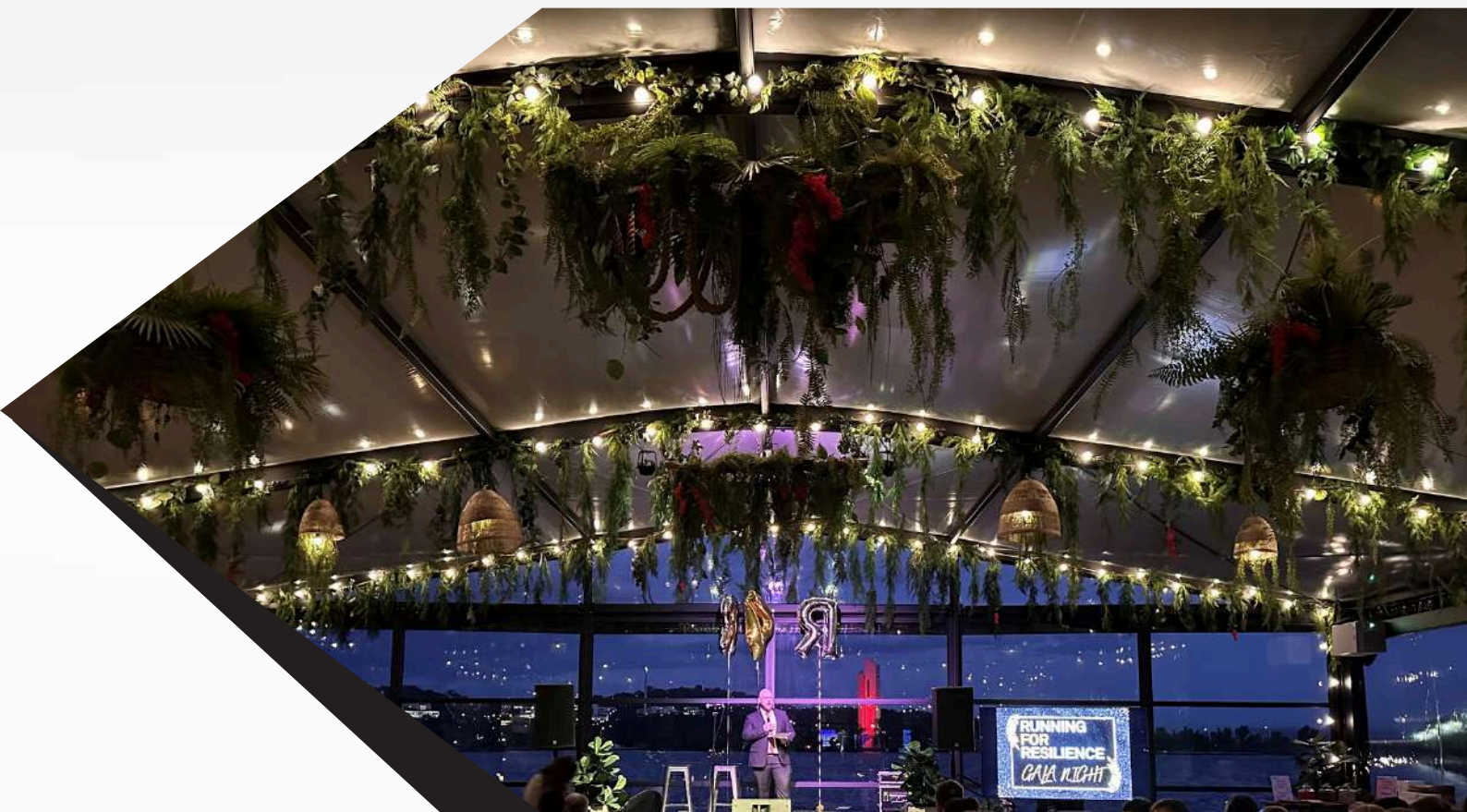
# VEGAS

## Benefits

**The Vegas allows for event venues, cafes, restaurants, and bars to be set up in just a few weeks, allowing you to start generating revenue sooner. Even those who are expanding their current venue or cafe can swiftly resume business operations.**

Looking for a structure that's budget-friendly and flexible? Consider the Vegas. Here's why:

- **Cost-effective:** The Vegas is an affordable option, which makes it an excellent choice for those just starting out or looking for a pop-up structure.
- **High flexibility:** If you're using leased land, you may need to move your structure at some point. Luckily, the Vegas is easy to set up and disassemble, making it simple to relocate when necessary.
- **Durable:** Made with high-quality materials, this modular structure comes with a hard-pressed aluminum frame that's perfect for semi-permanent use. You can even choose between glass or solid panel walls to suit your needs. Rest assured that the Vegas will withstand the test of time with little upkeep needed.



# VEGAS

## Elevate your Events

Constructed from top-of-the-line aluminum and glass material, the Vegas is an event structure that is both versatile and visually appealing. The modular design of the Vegas allows for easy adaptation to your specific location and available space.

The Vegas Structure comes in widths ranging from 5.00m to 15.00m with a 3.30m side height, and can be extended to any length with 5.00m bays.

Select from glass or solid paneling to suit your preferences. The metal frame is powder-coated black, providing a sleek and long-lasting exterior. The interior finish options consist of carpeting, cassette flooring, ceiling lining, lighting and HVAC, all designed to optimise comfort.

The Vegas Structure is a remarkable feat of engineering and aesthetics. The roof boasts the Parapet system, made of Alucobond or PVC material, which gives it a classic "cube characteristic" with a customizable appearance.

Alternatively, you can opt for a shallow pitch curved roof made of Thermo Twin layer PVC in white opaque. Basically, the Vegas is the most sophisticated and visually attractive event structure on the market today.



# VEGAS

## Architectural Drafts

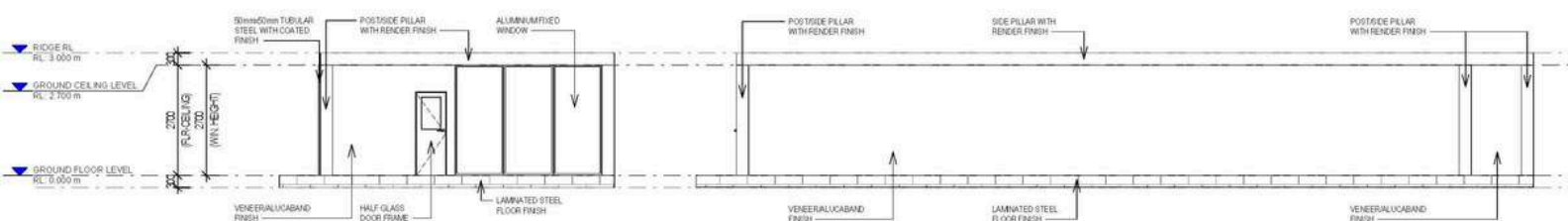
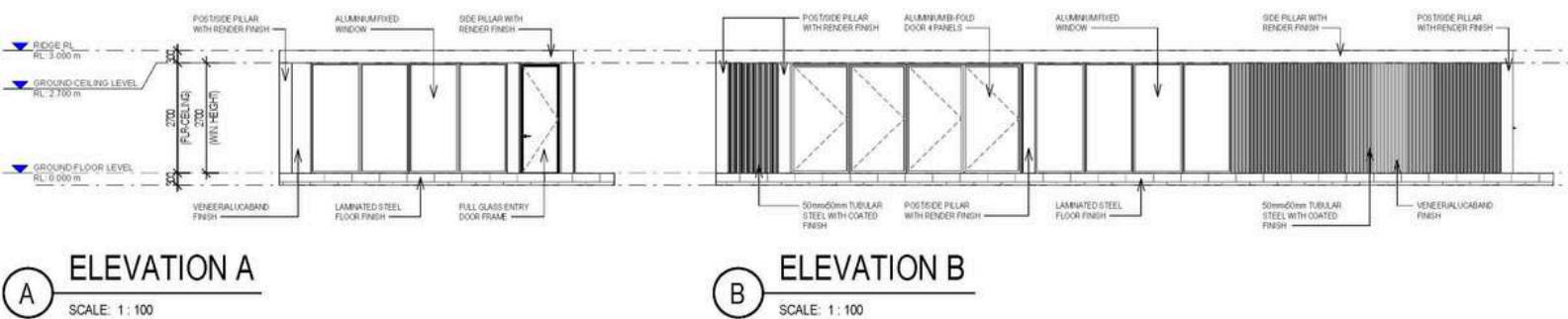
**Geanald Cruz is an experienced BIM/Architectural Drafter and Project Coordinator with over ten years in the field. He has worked with architectural firms in the U.S., Australia, and the Philippines, earning a reputation for technical excellence, creativity, and commitment to design integrity.**

Geanald has extensive experience in residential, commercial, and healthcare projects, specialising in Building Information Modelling (BIM), architectural drafting, and cross-disciplinary coordination.

He is proficient in Revit, AutoCAD, Bluebeam, and Microsoft Office, showcasing skills in 3D modeling, rendering, and detailed drafting. His roles include Project Coordinator, Revit Specialist, Architectural Drafter, and AutoCAD Head Draftsman, where he ensures regulatory compliance and effective communication with architects and engineers.

Geanald Cruz excels at creating efficient drawing configurations and incorporates feedback to ensure high accuracy and design intent. What distinguishes him is his emotive approach to architecture, viewing each drawing as a means to enhance human experience. He brings empathy, curiosity, and collaboration to his projects, thriving in environments where design is both functional and expressive.

With a solid background in architectural technology, he enhances every design detail, contributing to spaces that are not only well-constructed but also emotionally impactful.



# VEGAS

## Design Concepts



**Good 3D visuals are an important part of any project, our designer, Ziggy Ziegler, brings his skills to the table to provide just that. A true craftsman dedicated to making ideas come to life, Ziggy brings 30 years of experience in visualising concepts and translating ideas into reality.**

Working extensively in film, TV, theatre and events, before architecture and construction, gave him the ability to listen and comprehend functional and artistic concepts and how they relate to the people that use them.

This first-hand experience gained onsite in the real world lets Ziggy literally see a project in his mind and be able to translate that into visuals that make sense. Considering all the stakeholders and their requirements in the project, whilst remaining focused on creating inspired solutions at the same time.

Bringing projects to life in visuals is a passion that has been yielding amazing results across several industries in a large array of projects. Since starting incREDible Studios 5 years ago his focus has been on making these projects shine in a unique way.

From golf courses in the USA, glass structures in Dubai, terminals in New Zealand, airports in Australia, film studios in Japan, outdoor stadiums, shopping centres, race tracks, concert arenas, and retail Ziggy welcomes projects of all sizes with one specific goal, to get it right and make you smile.





# VEGAS

## From Design to Installation

**We have been managing projects, large and small since 2009 and throughout this time, we have worked tirelessly on ensuring we provide the best experience in the industry. We focus on our workflow ensuring every aspect is covered and delivered to your expectations. Enabling us to provide a turnkey solution for your design needs right through to installation.**

We call this our Concept to Installation process, and it all starts with you.

We share our experience and take care in understanding yours, to work together to achieve your desired outcomes.

From your brief, Ziggy Zeigler designs the concept. Creating concept designs allows us to bring our capabilities and merge these with your ideas to create the perfect space.

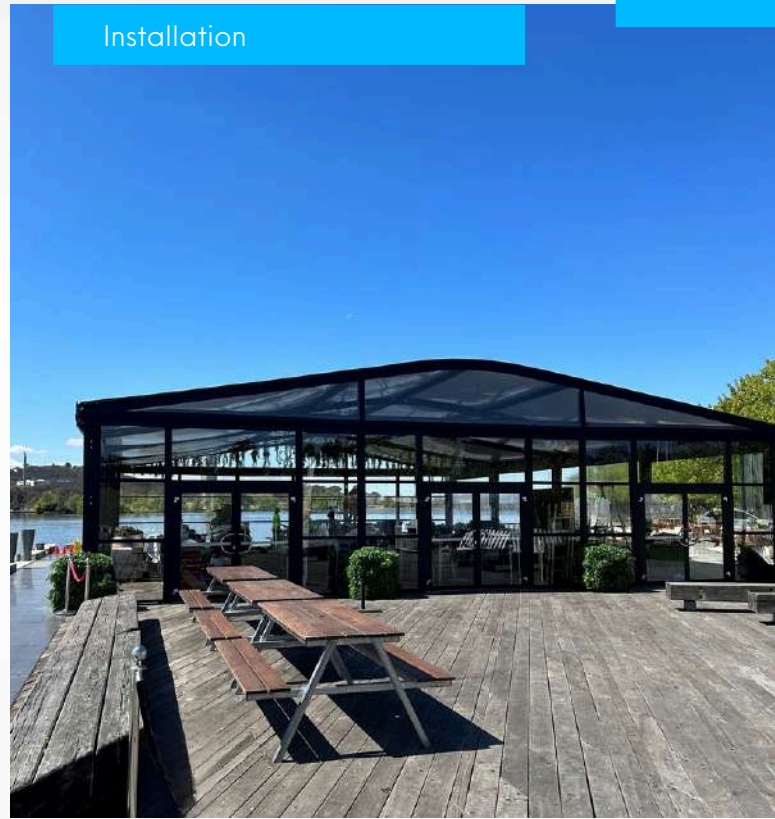
Our architects specify and document all design elements for submission to all relevant parties. One being our German engineering partners, HR Structures GmbH who manufacture the building framework, while our project management team source materials, building documentation through to installation. We provide a holistic approach to delivering your project.

We offer an ongoing maintenance program, ensuring your completed and installed building looks just as good as it did the day of install.

Concept



Installation





# VEGAS

## Specifications

- **Bracing System:** Internal high-level bracing giving open & clear span spaces.
- **Frame Construction:** Hard pressed 4 groove aluminium cube profile.
- **Profile Size:** Profile sizes relative to situation requirements.
- **Roof Covers:** Single Skin PVC, Thermo roof system or Parapet system.
- **Wind Loading:** Structures are all calculated to withstand wind loading based on the physical site location, and to meet Australian, New Zealand, and European safety standards.
- **Walling:** Facade walling system, vertical or horizontal glass walls, ABS solid wall or PVC soft walling relative to the situation requirement.
- **Floor options.** Cassette flooring systems, heavy duty flooring.



**Span Width**  
5.00m - 15.00m



**Length**  
Unlimited in  
5.00m bays



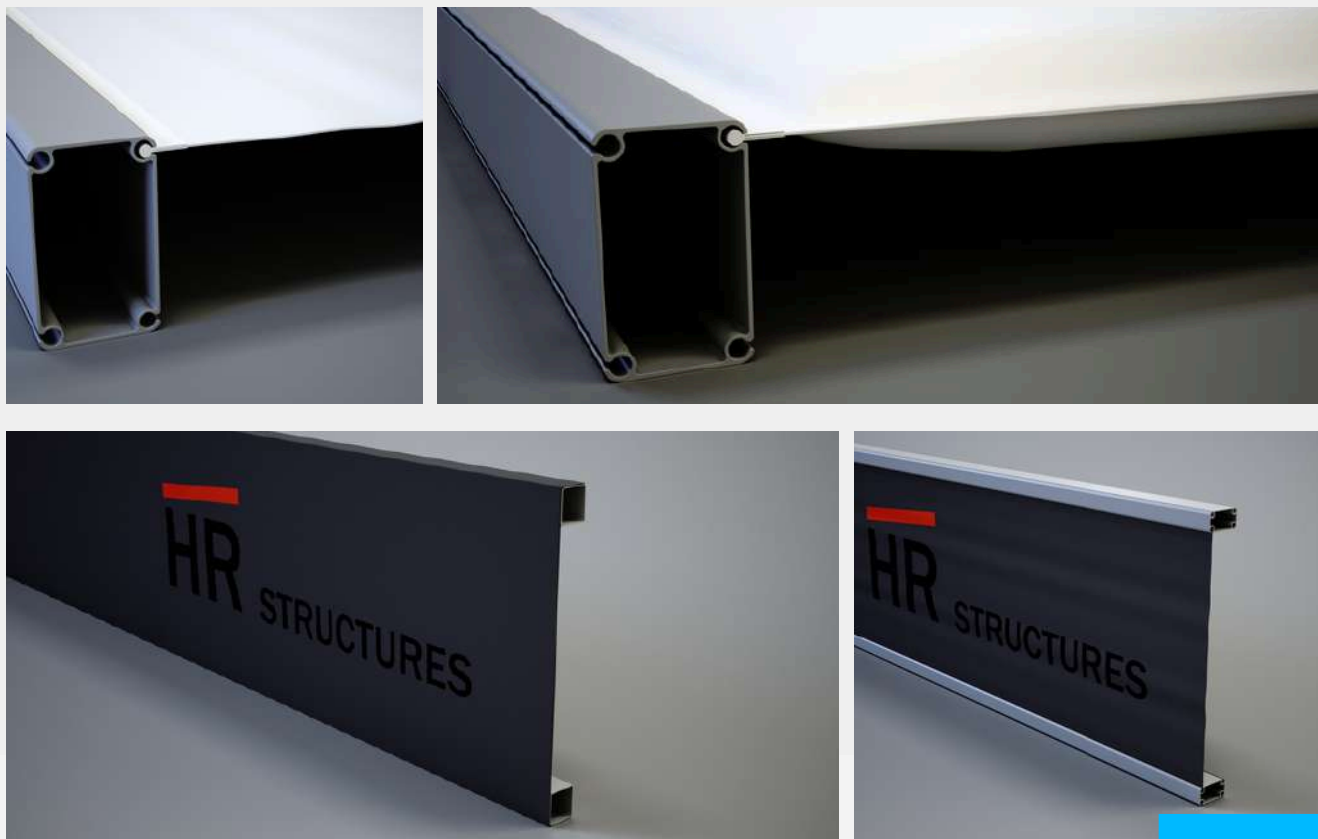
**Side Height**  
3.30m



**Custom**  
Fixtures & Dimensions  
available

# VEGAS

## Features



### Roof Cladding

#### Single Layer PVC Covers

PVC Covers are flame-retardant according to DIN 4102-B1, and come in translucent and opaque, and are available in a wide variety of colours.

#### Thermo Roof Covers

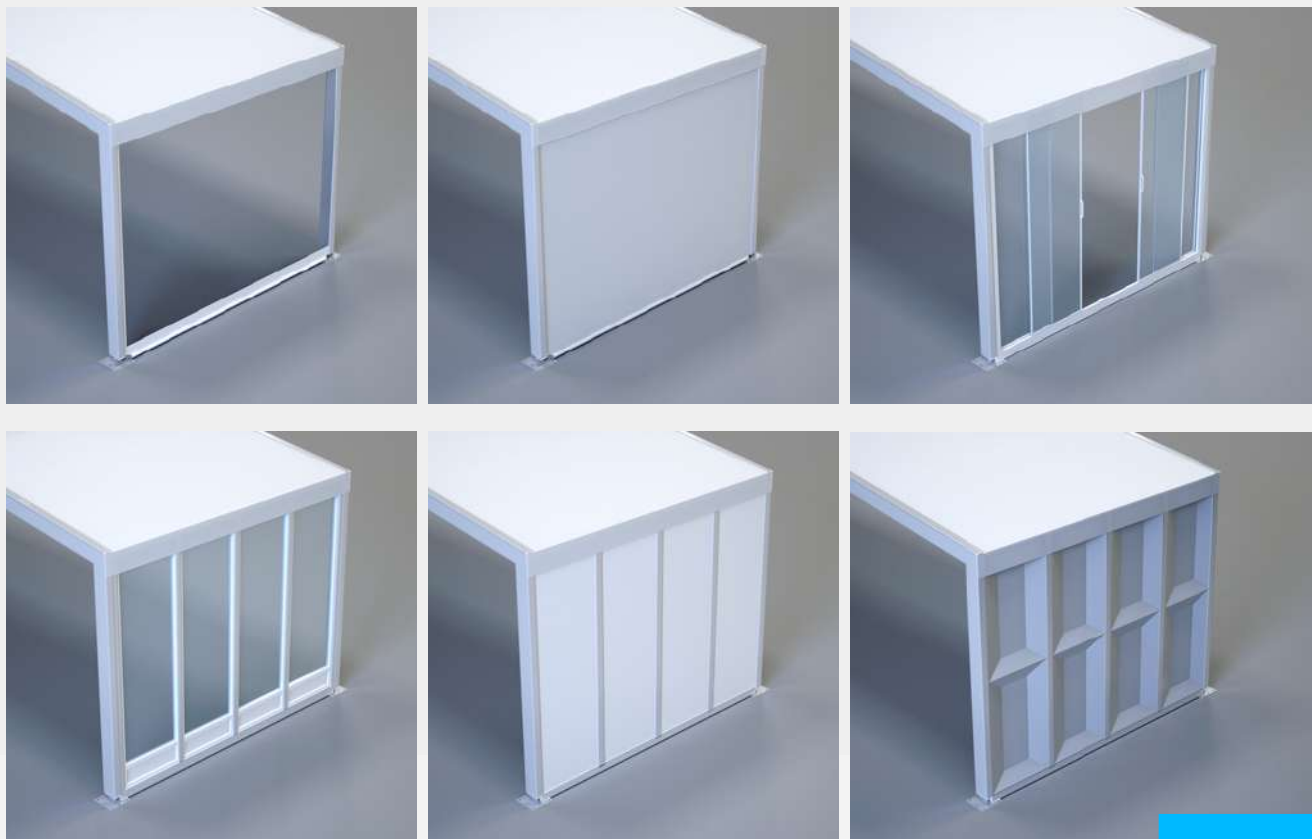
The air-filled double-shell roof PVC Covers provides additional insulation and condensation protection in the roof area. The PVC Covers, which is flame-retardant according to DIN 4102-B1, is both translucent and opaque and is available in a wide variety of colours.

#### Attica

The parapet made of Alucobond or PVC material gives the classic "cube character" with its own individually customisable look.

# VEGAS

## Features



### Wall Panels

#### **Vinyl Facades**

The Vinyl facade ensures a higher-quality side appearance and, thanks to its strength, offers better burglary and weather protection.

#### **Insulated Facade**

The insulated facade not only ensures a higher-quality side appearance, but in addition to its better protection against burglary and weather, it also offers additional thermal insulation.

#### **Glass Facade**

Available in a variety of designs, such as vinyl or aluminum frame, uninsulated or insulated glass, in various colours and tints.

#### **Glass Sliding Walls**

Entrances and exits or window elements in various facade systems, the glass sliding walls can be installed in our facade systems and visually adjusts to match the side paneling.

#### **PVC Side Walling**

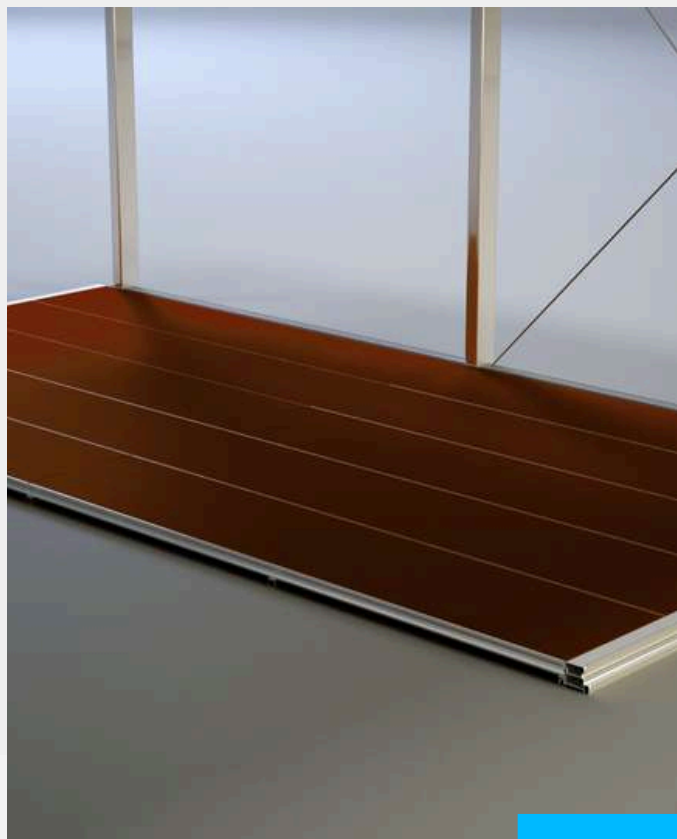
The flame-retardant PVC Covers according to DIN 4102-B1 is available in a range of colours, both translucent and opaque.

#### **PolyGlass Side Awning**

Our transparent covers for even more light is an exceptional alternative to the white PVC Covers.

# VEGAS

## Features



## Floors

### Cassette Flooring

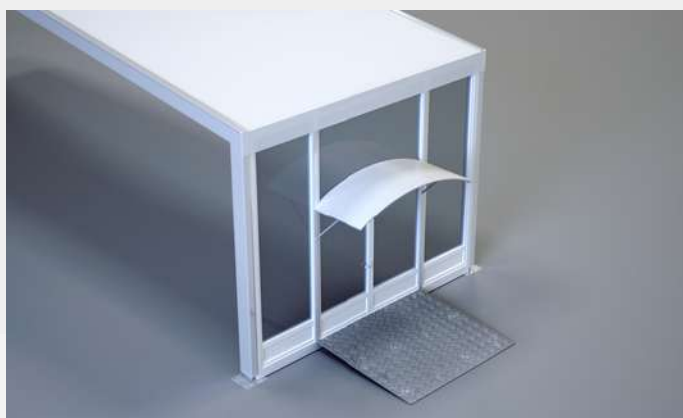
The visually appealing cassette floor is available with different wooden coverings and, with its lightweight aluminum substructure, has a traffic load of 350 and 500 kg/m<sup>2</sup>.

### Heavy Duty Flooring

The heavy-duty floor is the most efficient floor system in our range, which can be quickly installed using a forklift or crane. In addition, it has a low transport volume compared to other flooring systems.

# VEGAS

## Features



## Doors & Accessories

### Single Leaf/Double Leaf Doors

Entrances and exits in various facade systems, the single and double-leaf doors can be installed in our structure systems and visually adjusted to match the rest of the side paneling.

### Indoor/Outdoor Ramp

To enable barrier-free access to our structure systems, we offer various entry and exit ramps made of steel and aluminum.

### Overhead Door Canopy

Various canopies are available separately from our doors, which visually complete your entrance area and offer weather protection for this area.

### Transport Racks

Our transport racks offer optimal protection for loading and storing all structure and accessory parts.

# VEGAS

## Structure Types

### Cafes & Restaurants

Vegas structures can give food businesses a tailored and professional appearance that complements their brand. They provide flexibility to adjust the kitchen or seating area as per the business requirements, allowing for future growth without unexpected delays or expenses.

### Wineries

NZ Temporary Structures offers hospitality solutions that make a lasting impression, recognising that wineries are a brand that should reflect prestige and elegance both inside and out. The Vegas Structure features 360° glass walls, offering stunning views of the winery landscape and elevating guests' experience.

### Sporting Clubs

The Vegas is specifically tailored to exceed expectations for racing events, with a focus on providing a top-notch viewing experience of the racetrack. With its modern glass facades, it also provides ample room for retail outlets, dining establishments, cafes, product presentations, and an array of entertainment and hospitality spaces.





# VEGAS

## Structure Types

### Product Activations

The Vegas structure provides a versatile styling option to emphasise your brand and offer guests a one-of-a-kind experience. Interior elements can be tailored to your client specifications, with provisions for a wide range of branding choices. The structure can be preassembled with lighting and electrical fittings as needed to ensure it meets your requirements.

### Annual Events

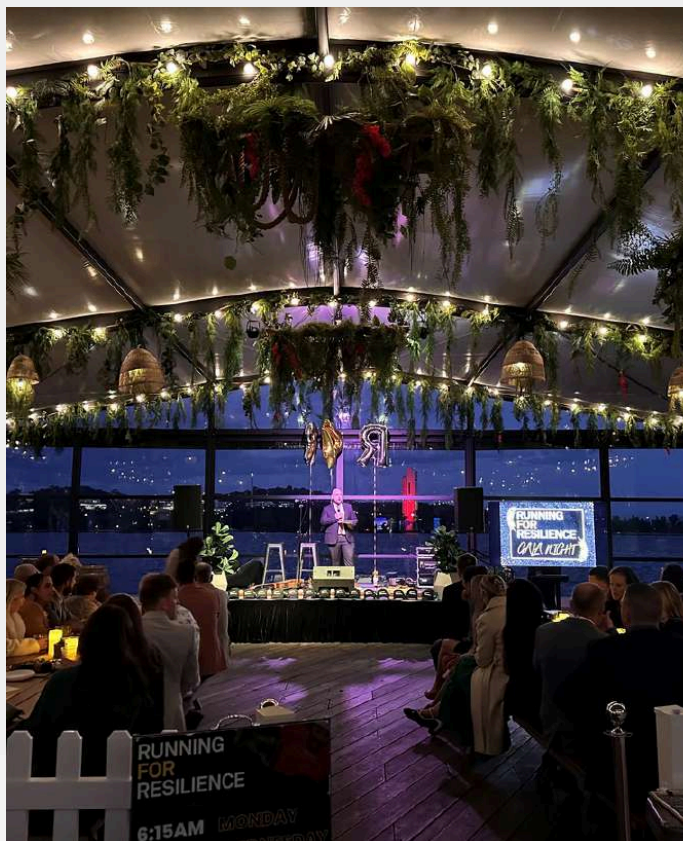
The Vegas Structure is an excellent choice for annual events that require modular and personalised designs. Moreover, the Vegas is built to withstand even the most demanding environments. It can be easily assembled and dismantled, leaving no impact on the ground.



# THE JETTY CBR

# THE JETTY

## Features



## Restaurant Project

The Jetty, located in the heart of Canberra, required a modular structure to cover the Beer Garden. Providing live music, local premium food & beverages.

Structure featured:

- 15m x 20m x 3.3m side height
- Shallow Pitch Curve roof.
- Black Powder Coated frame
- Thermo Twin layer PVC Roof in white Opaque PVC with Black Valance -
- Horizontal Skyline Light Glass
- 3 Double doors



**PREMIUM STRUCTURE**  
**RESTAURANT**

15.00m x 20.00m x 3.3m





VEGAS STRUCTURE  
**HR STRUCTURES**

10.00m x 10.00m x 3.30m



## VEGAS STRUCTURE HR STRUCTURES

Glass facade and walls, Iso  
Panel on back.

# PARTNER WITH US

## Your Innovative Partner in Modular Building

Modular buildings offer a sustainable and flexible approach to construction, allowing companies to reduce their environmental impact and promote recycling. They are ideal for companies interested in greening the building process.

Modular construction is a highly streamlined process that can see project times reduced as the structure components are manufactured offsite. And the insulated structure ensures a more consistent R-value rating.

Modular structures reduce the use of new material resources, demolition waste, construction time, and transportation costs. They also have the advantage of serving a new purpose beyond their expected lifespan.

Structures can be moved and repurposed for different functions including commercial and industrial applications such as offices, hospitals, warehouses, airport terminals, and sporting facilities. Their flexible configurations adapt well to different applications.





**Build Your Next Project**





## CONTACT US



0800 446 265



greg@nztemporarystructures.co.nz



www.nztemporarystructures.com



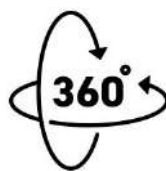
Suite 9796, 17B Farnham Street, Parnell,  
Auckland 1052



GERMAN  
ENGINEERED



CUSTOM  
SOLUTIONS



RELOCATABLE  
RECONFIGURABLE



PURCHASE  
OPTION



GREENER  
FUTURE

