



MODULAR STRUCTURES

PERTH



 0800 446 265

 www.nztemporarystructures.com

CONTENTS

— 03
INTRODUCTION

— 04
VERSATILE COMMERCIAL SPACE

— 05
BENEFITS

— 07
STRUCTURE DESIGN

— 10
FEATURES/ SPECIFICATIONS

— 15
STRUCTURE TYPES

— 17
PROJECTS

— 24
CONTACT



INTRODUCTION

NZ Temporary Structures is a proven, long-standing provider of modular building products, with an international delivery footprint in New Zealand, Australia, and the Pacific.

With the company's cost effective, flexible, responsive and fully integrated approach has made us a business leader in the modular structure marketplace since 2009.

NZ Temporary Structures offers sustainable modular buildings that provide fast and effective solutions for many industries.

The offsite manufacturing process minimises disruption onsite, and the structures are fully operational shortly after installation.

Our experienced operations team support customers through every development phase, offering a full turnkey solution for building modular facilities, including site preparation, offsite construction of modular components, and onsite delivery and installation.





PERTH

Versatile Commercial Space

German engineering at its finest with the Perth Structure. Crafted from premium-quality PVC, aluminum, and glass, this modular building is built to last. Not only is it structurally superior to traditional demountable structures, but it is also highly efficient, easy to maintain, and durable.

The Perth delivers innovative and adaptable designs that can be tailored to fit your specific requirements.

Our specialised off-site prefabrication construction process ensures that you enjoy the benefits of speed, quality, and cost savings.

Introducing the Perth, available in two designs – A Frame or semi-curve roof – with an eave height of up to 4.00m. Our high-grade PVC material comes in three variations: translucent, opaque, and white.

The Perth Structure can be configured with an integral cassette flooring system for added convenience.

External walling options include soft PVC standard translucent to maximise light, opaque for complete blackout, framed glass for an optimal view or feature, or ISO panels to provide a more permanent appearance.

PERTH

Benefits

The Perth Structure offers a flexible alternative to permanent venues. If you are looking for a way to create extra space without committing to a permanent venue, then the Perth Structure is an ideal solution.

The Perth Structure is designed to provide flexibility for any interior or exterior alterations and expansions.

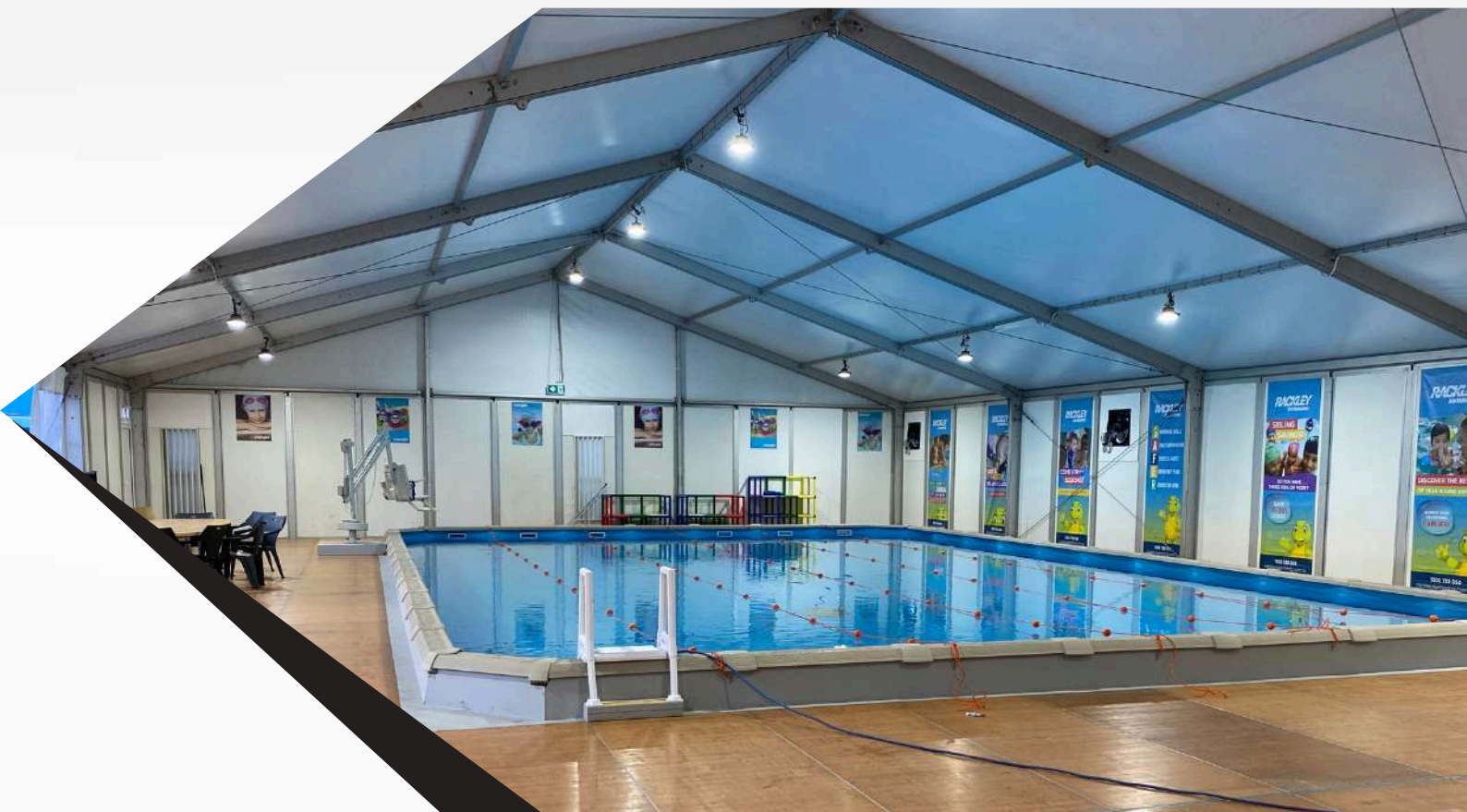
These remarkable structures can be installed on any existing level ground, without the need for a traditional foundation.

This structure can be free-standing or connected to existing buildings.

We offer a range of provisions, including electricity, lighting, heating, wet areas, personnel doors, and elegant entrance doors – plus many more options to suit your needs.

The Perth is very versatile and can be used for many applications, including:

Education | Government Buildings | Emergency Services | Law Courts | Religious Institutions
 | Healthcare | Hospitals | Aged Care | Hospitality | Event Services | Weddings | Sports Clubs |
 Ice Rinks | Gymnasiums | Swimming Pool Enclosures | Exhibitions | Event Launches |
 Commercial Retail | Cafes | Mining | Camp Facilities | Accommodation | Mess Halls



PERTH

The All-Rounder

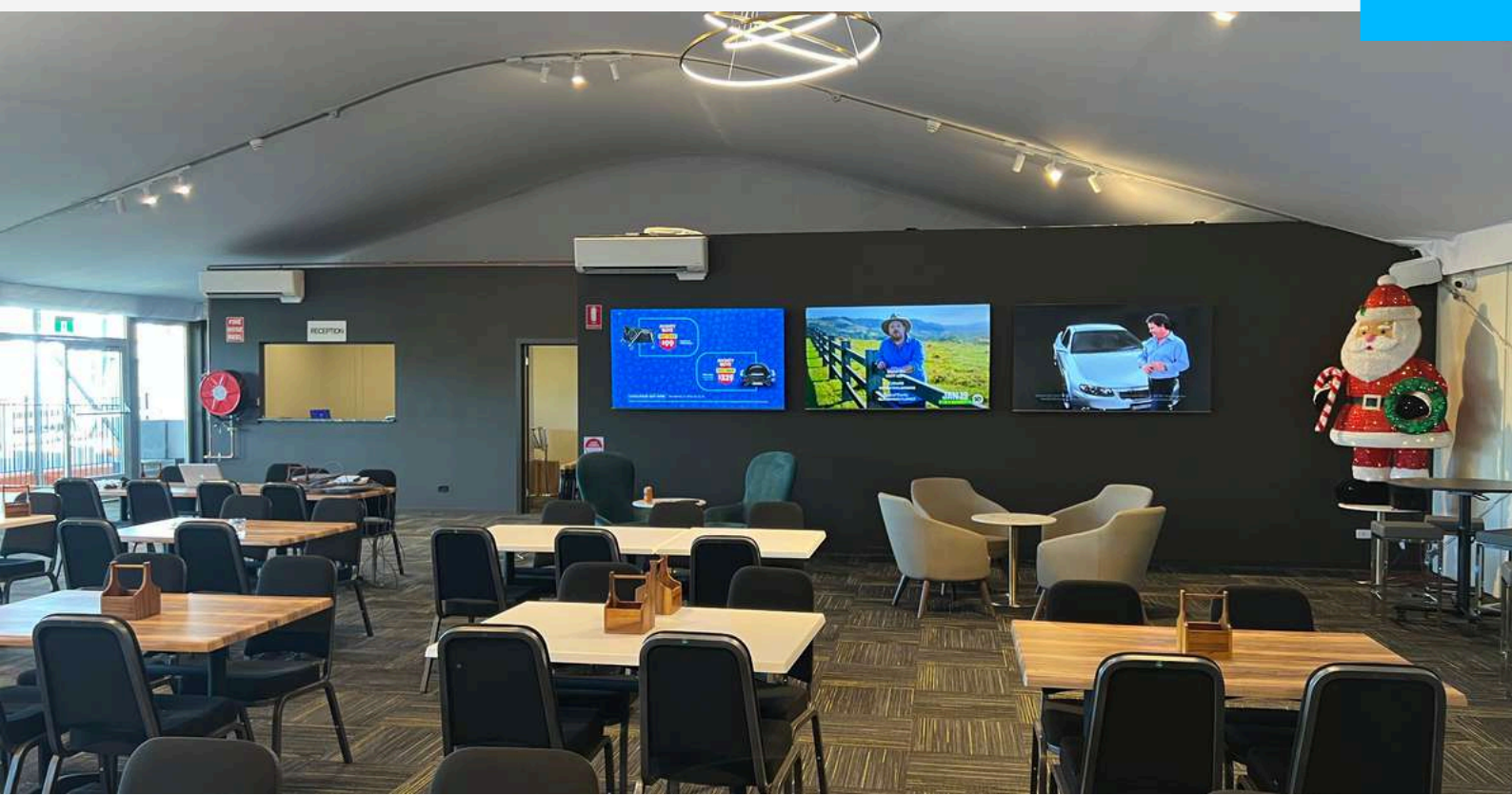
With its groundbreaking product design and the versatility of being flat-packed, relocated, reconfigured, and reused, The Perth Structure is a highly sustainable temporary building solution, making it the ideal choice for environmentally conscious individuals.

The Perth Structure is an affordable option that can be customised to fit your needs in various sizes.

Additionally, provisions for branding is available upon request.

Although many businesses pay a significant amount to rent the Perth Structure, purchasing it outright may be more cost-effective if you plan to use it for an extended period. We offer affordable pricing options, so don't hesitate to contact us for more information.

- Frames made from aluminium with the option for black powder-coated frames.
- Can be ground-staked or bolted as required.
- Portable – setup / takedown in a matter of days.
- Environmentally friendly.
- The building's potential to repurpose allows for high resale values.



PERTH

Architectural Drafts

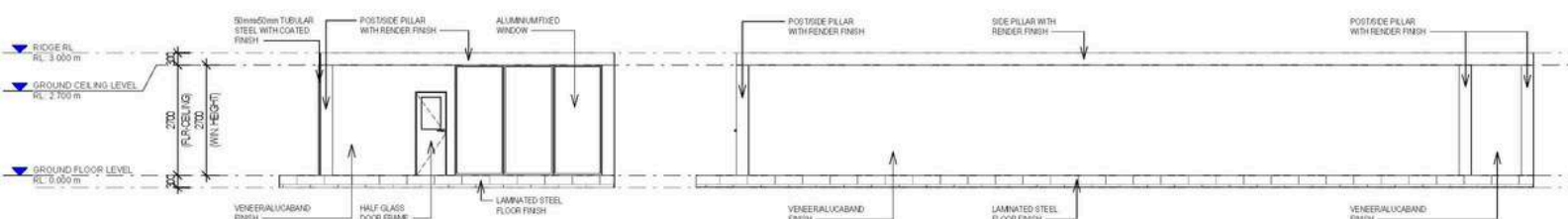
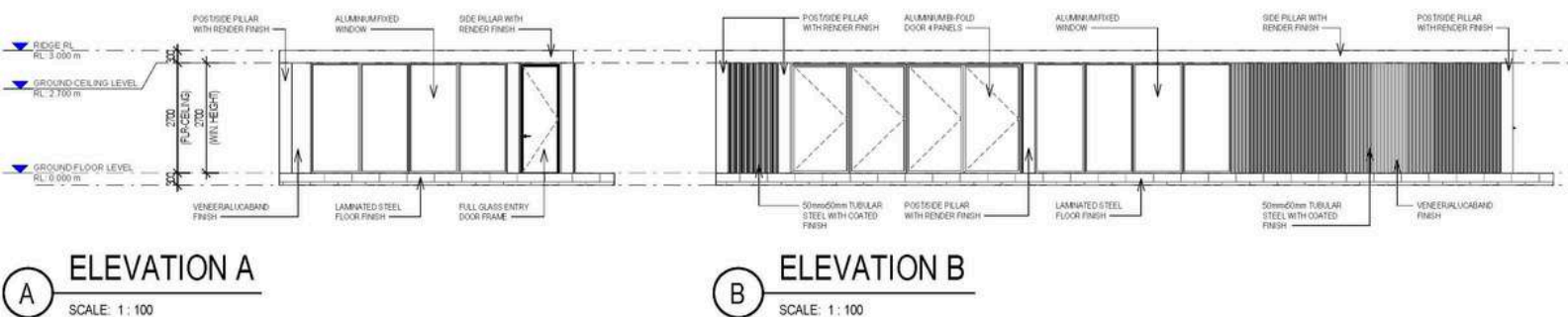
Geanald Cruz is an experienced BIM/Architectural Drafter and Project Coordinator with over ten years in the field. He has worked with architectural firms in the U.S., Australia, and the Philippines, earning a reputation for technical excellence, creativity, and commitment to design integrity.

Geanald has extensive experience in residential, commercial, and healthcare projects, specialising in Building Information Modelling (BIM), architectural drafting, and cross-disciplinary coordination.

He is proficient in Revit, AutoCAD, Bluebeam, and Microsoft Office, showcasing skills in 3D modeling, rendering, and detailed drafting. His roles include Project Coordinator, Revit Specialist, Architectural Drafter, and AutoCAD Head Draftsman, where he ensures regulatory compliance and effective communication with architects and engineers.

Geanald Cruz excels at creating efficient drawing configurations and incorporates feedback to ensure high accuracy and design intent. What distinguishes him is his emotive approach to architecture, viewing each drawing as a means to enhance human experience. He brings empathy, curiosity, and collaboration to his projects, thriving in environments where design is both functional and expressive.

With a solid background in architectural technology, he enhances every design detail, contributing to spaces that are not only well-constructed but also emotionally impactful.



PERTH

Design Concepts



Good 3D visuals are an important part of any project, our designer, Ziggy Ziegler, brings his skills to the table to provide just that. A true craftsman dedicated to making ideas come to life, Ziggy brings 30 years of experience in visualising concepts and translating ideas into reality.

Working extensively in film, TV, theatre and events, before architecture and construction, gave him the ability to listen and comprehend functional and artistic concepts and how they relate to the people that use them.

This first-hand experience gained onsite in the real world lets Ziggy literally see a project in his mind and be able to translate that into visuals that make sense. Considering all the stake holders and their requirements in the project, whilst remaining focused on creating inspired solutions at the same time.

Bringing projects to life in visuals is a passion that has been yielding amazing results across several industries in a large array of projects. Since starting incREDible Studios 5 years ago his focus has been on making these projects shine in a unique way.

From golf courses in the USA, glass structures in Dubai, terminals in New Zealand, airports in Australia, film studios in Japan, outdoor stadiums, shopping centres, race tracks, concert arenas, and retail Ziggy welcomes projects of all sizes with one specific goal, to get it right and make you smile.



PERTH

From Design to Installation

We have been managing projects, large and small since 2009 and throughout this time, we have worked tirelessly on ensuring we provide the best experience in the industry. We focus on our workflow ensuring every aspect is covered and delivered to your expectations. Enabling us to provide a turnkey solution for your design needs right through to installation.

We call this our Concept to Installation process, and it all starts with you.

We share our experience and take care in understanding yours, to work together to achieve your desired outcomes.

From your brief, Ziggy Zeigler designs the concept. Creating concept designs allows us to bring our capabilities and merge these with your ideas to create the perfect space.

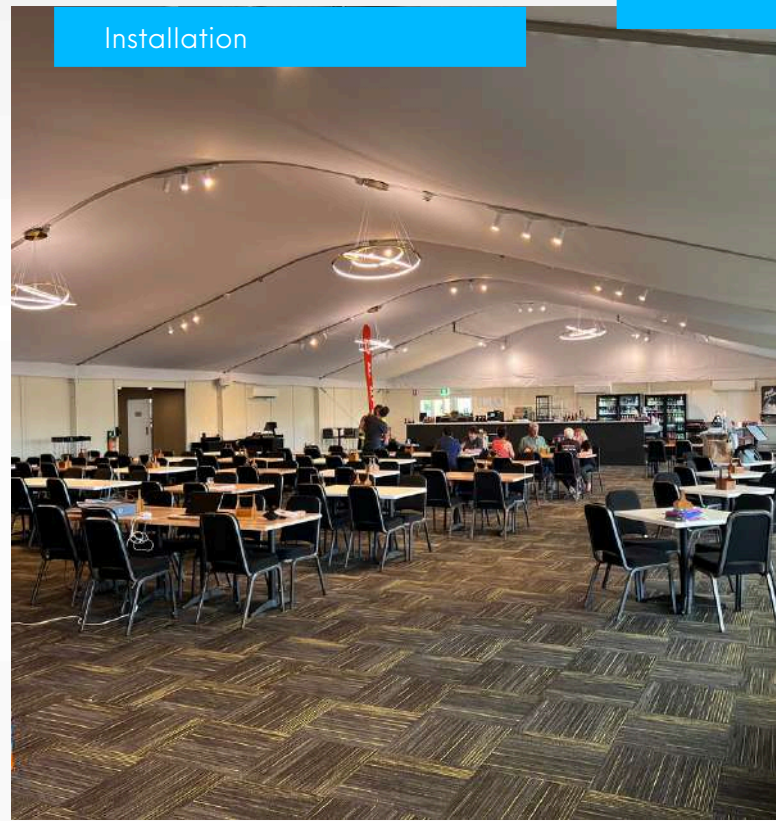
Our architects specify and document all design elements for submission to all relevant parties. One being our German engineering partners, HR Structures GmbH who manufacture the building framework, while our project management team source materials, building documentation through to installation. We provide a holistic approach to delivering your project.

We offer an ongoing maintenance program, ensuring your completed and installed building looks just as good as it did the day of install.

Concept



Installation

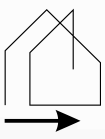




PERTH

Specifications

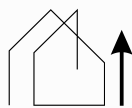
- Bracing System: Internal high-level bracing giving open & clear span spaces.
- Frame Construction: Hard pressed 4 groove aluminium cube profile.
- Profile Size: Profile sizes relative to situation requirements.
- Roof Covers: Single skin PVC
- Wind Loading: Structures are all calculated to withstand wind loading based on the physical site location, and to meet Australian, New Zealand, and European safety standards.
- Walling: PVC Soft Wall, ABS solid wall, Framed Glass
- Floor options. Cassette flooring systems, heavy duty flooring.



Span Width
5.00m - 25.00m



Length
Unlimited in 5.00m bays



Side Height
4.00m



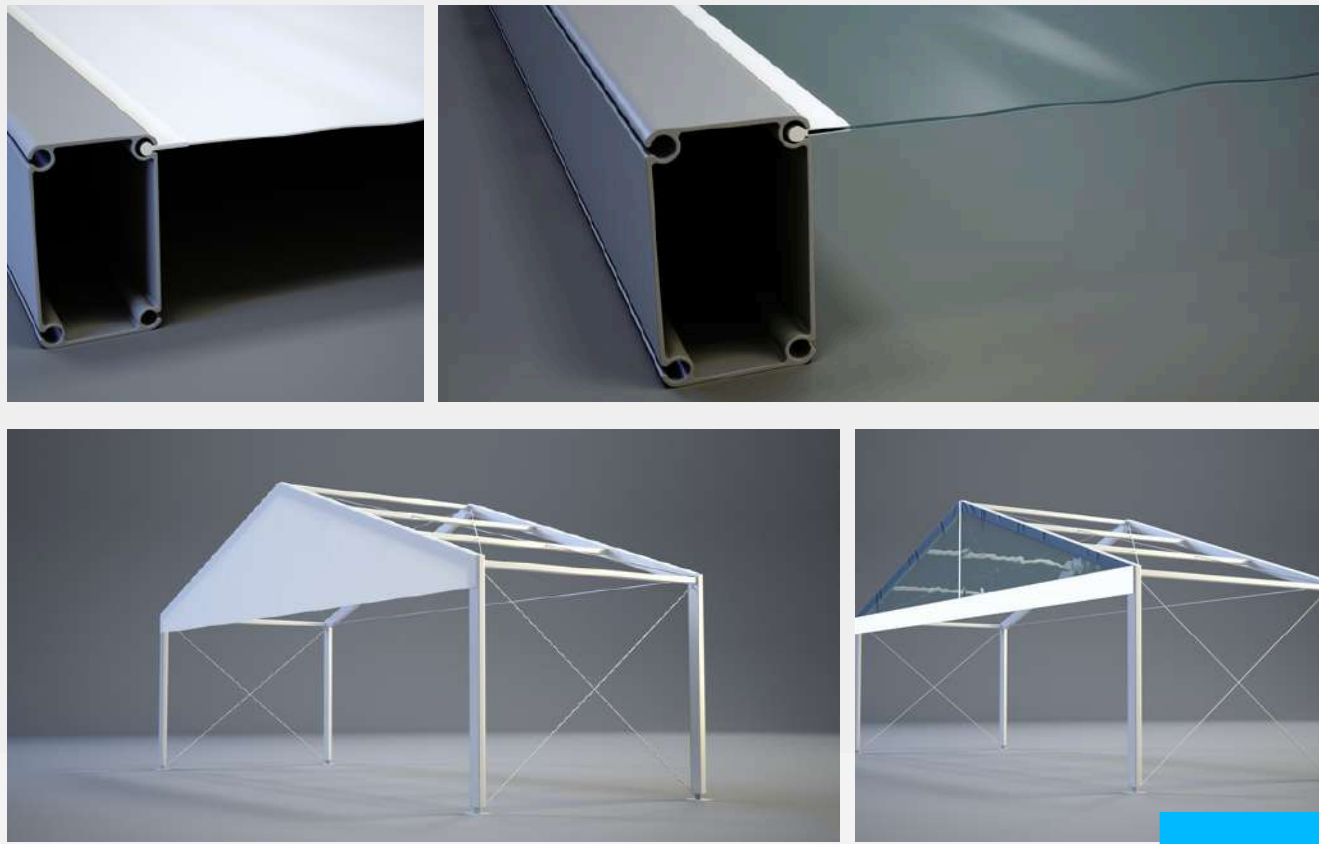
Custom
Fixtures & Dimensions available



Purchase
Request a Quote

PERTH

Features



Roof Cladding

Single Layer PVC Covers

PVC Covers are flame-retardant according to DIN 4102-B1, and come in translucent and opaque, and are available in a wide variety of colours.

Poly Glass Roof PVC Covers

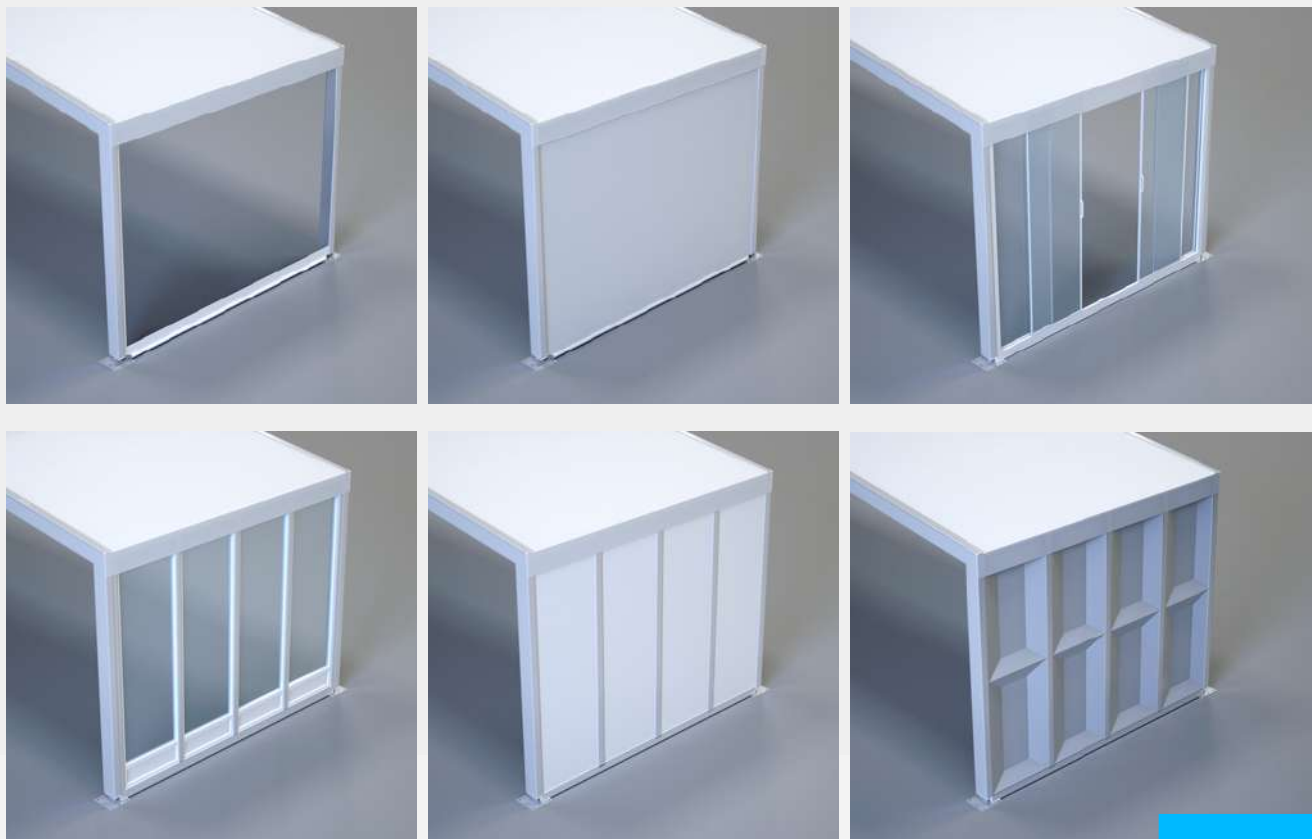
Our transparent Poly Glass PVC Covers allows for natural light and is an exceptional alternative to the white PVC Covers.

Gables

Gables come in translucent and opaque in either PVC or Poly Glass.

PERTH

Features



Wall Panels

Vinyl Facades

The Vinyl facade ensures a higher-quality side appearance and, thanks to its strength, offers better burglary and weather protection.

Insulated Facade

The insulated facade not only ensures a higher-quality side appearance, but in addition to its better protection against burglary and weather, it also offers additional thermal insulation.

Glass Facade

Available in a variety of designs, such as vinyl or aluminum frame, uninsulated or insulated glass, in various colours and tints.

Glass Sliding Walls

Entrances and exits or window elements in various facade systems, the glass sliding walls can be installed in our facade systems and visually adjusts to match the side paneling.

PVC Side Walling

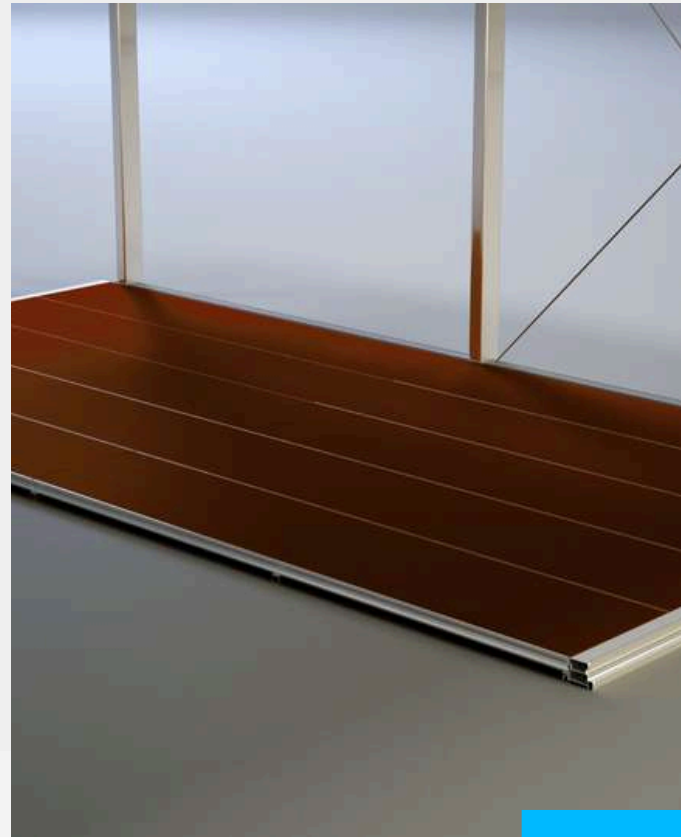
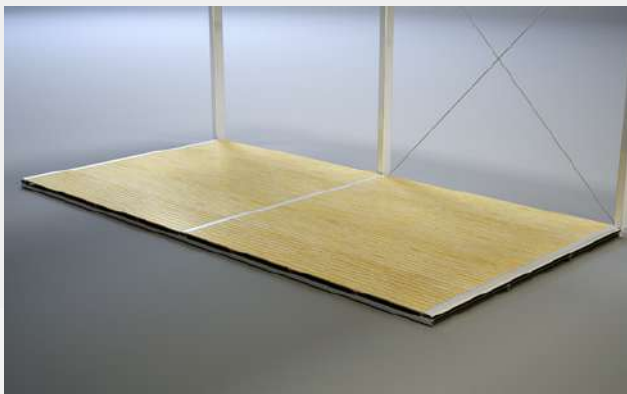
The flame-retardant PVC Covers according to DIN 4102-B1 is available in a range of colours, both translucent and opaque.

PolyGlass Side Awning

Our transparent covers for even more light is an exceptional alternative to the white PVC Covers.

PERTH

Features



Floors

Cassette Flooring

The visually appealing cassette floor is available with different wooden coverings and, with its lightweight aluminum substructure, has a traffic load of 350 and 500 kg/m².

Heavy Duty Flooring

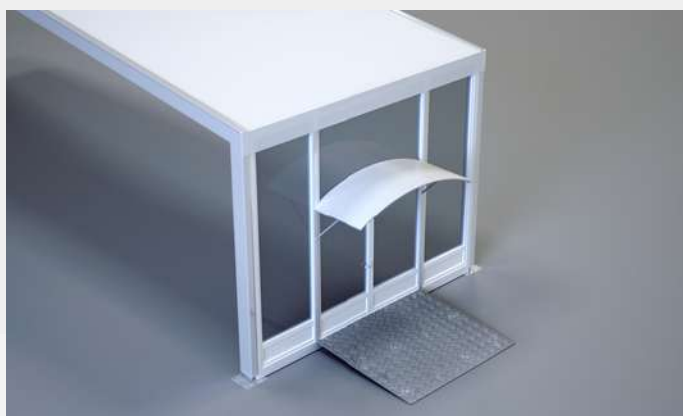
The heavy-duty floor is the most efficient floor system in our range, which can be quickly installed using a forklift or crane. In addition, it has a low transport volume compared to other flooring systems.

Steel Substructure Wooden Laying Panels

The steel substructure with wooden laying panels is a proven, solid and cost-effective flooring system that is available with a traffic load of 350 and 500 kg/m².

PERTH

Features



Doors & Accessories

Single Leaf/Double Leaf Doors

Entrances and exits in various facade systems, the single and double-leaf doors can be installed in our structure systems and visually adjusted to match the rest of the side paneling.

Indoor/Outdoor Ramp

To enable barrier-free access to our structure systems, we offer various entry and exit ramps made of steel and aluminum.

Overhead Door Canopy

Various canopies are available separately from our doors, which visually complete your entrance area and offer weather protection for this area.

Transport Racks

Our transport racks offer optimal protection for loading and storing all structure and accessory parts.

PERTH

Structure Types

Event Space

The Perth Structure provides a flexible and lightweight frame for event structures suitable for outdoor events, weddings, and corporate functions. These structures are visually stunning, easy to set up and take down on any terrain, and do not require time-consuming foundations.

Sports

Perth Structures are built using bespoke materials and building techniques specifically for sports buildings, offering great lighting, space, and temperature control for an ideal exercising environment. They use ABS wall panels, thermo roofs, cassette floors, and climate control to create sports buildings that are both practical and inspiring.

Government

Flexible building space for government agencies or local councils. Modular structures can serve as temporary field offices in areas where traditional construction isn't an option.

Education & Healthcare

Perth Structure provides a solution for temporary classrooms and covered social spaces in schools, colleges, and universities. Plus, healthcare, hospitals and aged care. They offer modular buildings in different sizes up to 25m wide, and can build in confined areas with limited space.





PERTH

Structure Types

Mining Camp Facilities

The Perth Structure is flexible and can be used as accommodation, mess halls, or emergency services space, with various flooring, wall, and roofing options available. Climate control systems and electricity access are also offered for a fully functioning space.

Flex Usage

The Perth Structure allows for a wide range of commercial space for virtually any application. The structure can be used for many purposes and is easier to meet a company's needs whatever it may be. This flexibility is ideal for a wide range of companies that need commercial space quickly.

AMAZON STUDIOS

amazonstudios

Features



Costume & Catering Centres

Temporary costume and catering space during filming on location for Amazon Studios while filming Sweet Tooth.

Custom structure featured:

- Key Features:
- Glass walls in 7m x 5m bays
- Double glass door
- Cassette flooring system



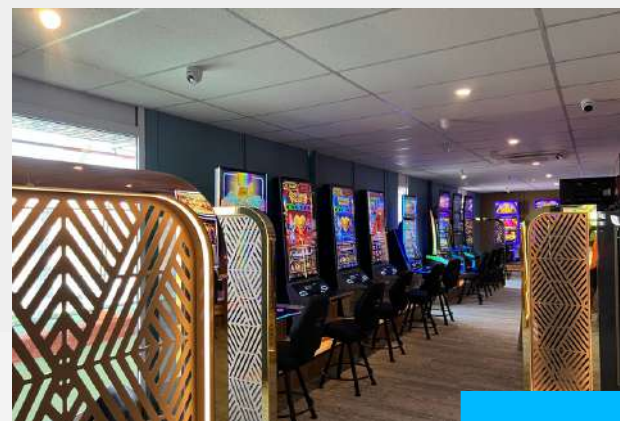
PERTH STRUCTURE
AMAZON STUDIOS

20.00m x 20.00m Structure



MORWELL BOWLING CLUB

Features



Morwell Bowling Club Project

When disaster occurs, the impact goes beyond just physical structures; it affects businesses, communities, and livelihoods.

Morwell Bowling Club faced this when a fire destroyed their facility, disrupting operations and income. They urgently needed a solution, which was provided through a rapid-build response.

The structure featured 2 buildings:

- Block out Roofs & Gables
- Cassette Flooring
- Bridging the roof and side wall gap in the Corridor into the Bistro
- White ISO Walling including internal walls for the Kitchen & Gaming Room
- Glass Walling and Double Glass Doors
- Flat ceiling lining – Bistro area
- AC Units



PERTH STRUCTURE

MORWELL BOWLS

15.00m x 30.00m x 3.00m

SUMMERSET

Features



Cranbourne North Project

Summerset Retirement Village in Cranbourne North offers convenient retirement living near shopping centres, medical facilities, cafes, and restaurants. We installed a 12m x 20m recreation room with a curved Thermo roof, providing insulation and climate control, featuring a kitchen and toilet facility.

The structure featured:

- Premium Thermo roof
- 2 Double doors with panic push bars
- 1 x entry arch cover
- 8 Bays of glass walling
- 3.5m Bays of Iso panel insulated wall system
- Disable unisex toilet facility
- Kitchen
- Cassette floor



PERTH STRUCTURE
SUMMERSET

12.00m x 20.00m x 3.00m



OTTIMO HOUSE

Features



Wedding Reception Project

In 2023, we were required to relocate the glass gable end to The Marquee and refit it as an enclosed glass frontage over the 5m decking. We also fit a 5m x 4m double glass door in the side bay. The extension has gained an extra 75 sq/m of internal space.

Custom structure featured:

- A Frame Structure with sandwich panel roof in white and full clear glass panels to the front and back of the structure.
- Polished concrete floor, internal linings, separate toilet area and 5m outdoor decking.



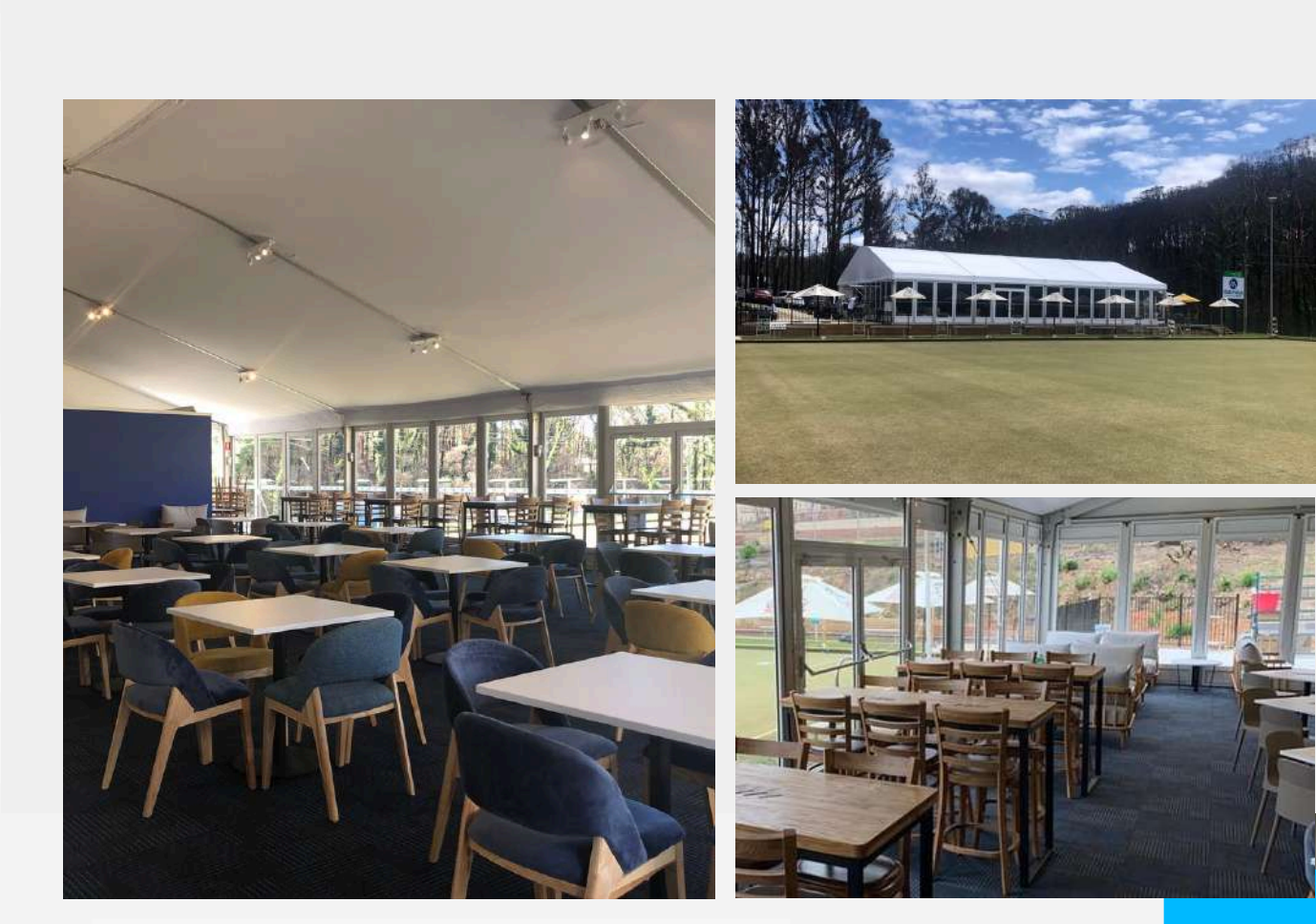
CUSTOM STRUCTURE
OTTIMO HOUSE

15.00m x 35.00m x 4.20m

CLUB MALUA



Features



Fire Disaster Project

Club Malua was destroyed in the devastating 2020 bushfires. Cabra Bowls Group engaged Paynters, a proven leader in project solutions, who reached out to us with the aim to provide Club Malua with a temporary clubhouse. They named the temporary clubhouse, Marquee at Club Malua.

Warehouse structure featured:

- 15m x 20m semi curved roof structure
- 5m Bay ISO panel wall system.
- 5m bay glass walling, fit within a white aluminium 30mm thick frame work.
- Double doors, complete with crash bars, stainless D Handles, and locks.
- Premium Cassette Floor System.



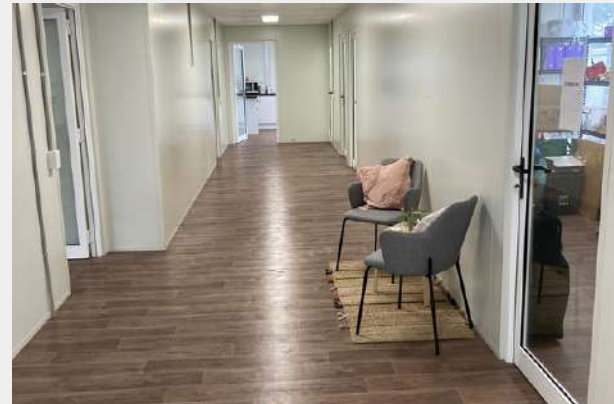
PREMIUM STRUCTURE

CLUB MALUA

15.00m x 20.00m semi curved roof



Features



Childcare Centre Nowra

HMAS Albatross Nowra required a temporary child care centre for their barracks in Nowra. In conjunction with Duratec, we provided them with a fully fitted out premium structure including a toddler sized bathroom.

Structure featured:

- Block out roof
- 5 bays of glass walling
- 2 glass double doors
- 1 x personnel door
- 9 bays of iso panel insulated walls
- 4 bays of insulated walls
- 2 x Clear Gables
- Cycle air conditioning flooring.



PREMIUM STRUCTURE

DURATEC

15.00m x 30.00m A Frame Roof

RACKLEY SWIMMING



Features



Covered Swimming Pool

Rackley Swimming were faced with the challenges of rebuilding their whole pool complex and needed a temporary pool to provide their patrons with an indoor swimming pool facility.

Structure featured:

- Underdeck built on concrete blocks and a Floorstak decking system 600mm high to cover the pool area.
- Single skin roof
- 11 bays of Iso panel insulated walls
- 1 Double glass door
- 6 bays of clear vinyl walls
- Single glass door



CUSTOM STRUCTURE
RACKLEY SWIMMING

15.00m x 25.00m x 4.00m

PARTNER WITH US

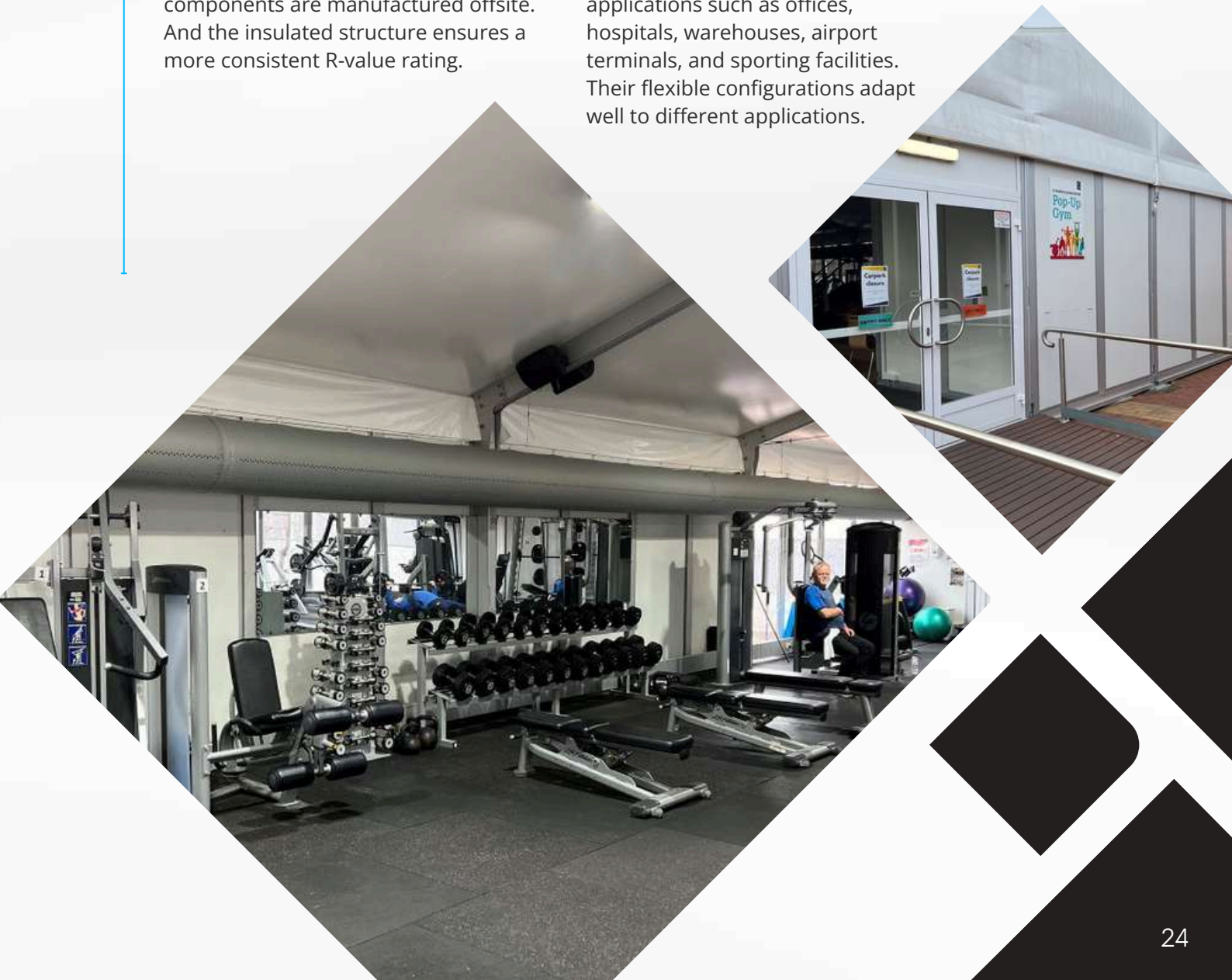
Your Innovative Partner in Modular Building

Modular buildings offer a sustainable and flexible approach to construction, allowing companies to reduce their environmental impact and promote recycling. They are ideal for companies interested in greening the building process.

Modular construction is a highly streamlined process that can see project times reduced as the structure components are manufactured offsite. And the insulated structure ensures a more consistent R-value rating.

Modular structures reduce the use of new material resources, demolition waste, construction time, and transportation costs. They also have the advantage of serving a new purpose beyond their expected lifespan.

Structures can be moved and repurposed for different functions including commercial and industrial applications such as offices, hospitals, warehouses, airport terminals, and sporting facilities. Their flexible configurations adapt well to different applications.





Build Your Next Project





CONTACT US



0800 446 265



greg@nztemporarystructures.co.nz



www.nztemporarystructures.com



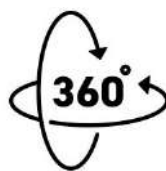
Suite 9796, 17B Farnham Street, Parnell,
Auckland 1052



GERMAN
ENGINEERED



CUSTOM
SOLUTIONS



RELOCATABLE
RECONFIGURABLE



PURCHASE
OPTION



GREENER
FUTURE

